

# BluePippin<sup>TM</sup>

**DNA Size Selection System**

**Operations Manual**

**Sage Science Inc.  
Suite 2400  
500 Cummings Center  
Beverly, MA. 01915**

*©2018 Sage Science, Inc. All rights reserved. Sage Science and BluePippin are trademarks of Sage Science, Inc.*

*All other brands and name mentioned herein are property of their owners.*

*The BluePippin instrument and gel cassettes are covered by U.S. patents **8,361,298** and **8,361,299**.*

## TABLE OF CONTENTS

<b>1</b>	<b>INTRODUCTION .....</b>	<b>1-1</b>
	1.1 System Overview .....	1-1
	1.2 How the System Works .....	1-2
	1.3 Collection Strategies .....	1-2
	1.4 Collection Types .....	1-3
<b>2</b>	<b>KEYS TO SUCCESSFUL COLLECTIONS .....</b>	<b>2-1</b>
	2.1 Common Misconceptions .....	2-1
	2.2 Improving Sample Yield .....	2-3
	2.3 Improving Sample Yield for HMW DNA .....	2-3
<b>3</b>	<b>SAFETY AND PRECAUTIONS .....</b>	<b>3-4</b>
<b>4</b>	<b>UNPACKING AND INSTALLATION .....</b>	<b>4-1</b>
<b>5</b>	<b>WORKFLOW SUMMARY .....</b>	<b>5-1</b>
<b>6</b>	<b>SAMPLE PREPARATION .....</b>	<b>6-1</b>
<b>7</b>	<b>PROGRAMMING GUIDE .....</b>	<b>7-1</b>
	7.1 Overview .....	7-1
	7.2 Programming Summary .....	7-2
	7.3 Selecting a Cassette Definition .....	7-4
	7.4 Run Times .....	7-5
	7.5 Assigning a Reference Marker – external marker .....	7-6
	7.6 Assigning Reference Markers – internal standards .....	7-7
	7.7 Warnings and Indicators .....	7-8
<b>8</b>	<b>PROGRAMMING SIZE SELECTIONS – TIGHT, RANGE, AND TIMED MODES .....</b>	<b>8-1</b>
	8.1 Tight Mode – programming minimum size range collections .....	8-1
	8.2 Range Mode– programming broad size range collections .....	8-2
	8.3 Time Mode – programming timed collections .....	8-4
<b>9</b>	<b>OPTICAL CALIBRATION .....</b>	<b>9-1</b>

**CONTENTS (Cont'd)**

<b>10</b>	<b>PREPARING A CASSETTE .....</b>	<b>10-1</b>
10.1	<i>Visually Inspect the Cassette .....</i>	<i>10-1</i>
10.2	<i>Prepare the Cassette for Loading .....</i>	<i>10-3</i>
10.3	<i>Continuity Test.....</i>	<i>10-4</i>
<b>11</b>	<b>LOADING SAMPLES.....</b>	<b>11-1</b>
<b>12</b>	<b>RUNNING A PROTOCOL .....</b>	<b>12-1</b>
12.1	<i>Overview .....</i>	<i>12-1</i>
12.2	<i>Starting a Run.....</i>	<i>12-2</i>
12.3	<i>Monitoring a Run .....</i>	<i>12-3</i>
12.4	<i>Log Files .....</i>	<i>12-5</i>
<b>13</b>	<b>SAMPLE COLLECTION .....</b>	<b>13-1</b>
13.1	<i>Overview .....</i>	<i>13-1</i>
<b>14</b>	<b>SAMPLE RECOVERY AND YIELD.....</b>	<b>14-1</b>
14.1	<i>Overview .....</i>	<i>14-1</i>
14.2	<i>Intrinsic Sample Recovery on the BluePippin .....</i>	<i>14-1</i>
14.3	<i>Improving Product Yield by Selecting a Wider Size Range.....</i>	<i>14-2</i>
14.4	<i>Improving Product Recovery with the Field Reversal .....</i>	<i>14-3</i>
14.5	<i>HMW DNA: Recommendations to Improve Yield.....</i>	<i>14-4</i>
<b>15</b>	<b>SYSTEM VALIDATION .....</b>	<b>15-1</b>
<b>16</b>	<b>SYSTEM OPTIONS TAB .....</b>	<b>16-1</b>
<b>17</b>	<b>RUNNING IN MANUAL MODE .....</b>	<b>17-1</b>
<b>18</b>	<b>ANALYZING RUNS - LOG REVIEW TAB.....</b>	<b>18-1</b>
<b>19</b>	<b>MANAGING FILES -- FILE MANAGER TAB .....</b>	<b>19-1</b>
19.1	<i>Overview .....</i>	<i>19-1</i>
19.2	<i>File Types.....</i>	<i>19-2</i>
19.3	<i>Transferring files.....</i>	<i>19-3</i>
<b>20</b>	<b>UPGRADING SOFTWARE .....</b>	<b>20-1</b>
20.1	<i>Extracting the Files to a USB flash drive .....</i>	<i>20-1</i>
20.2	<i>Upgrading the Pippin Instrument Software.....</i>	<i>20-3</i>

**CONTENTS (Cont'd)**

<b>21</b>	<b><i>PREVENTATIVE MAINTENANCE – RINSING ELECTRODES</i></b> .....	<b>21-5</b>
	21.1 <i>Electrode Rinse Procedure</i> .....	21-5
<b>22</b>	<b><i>WARRANTY AND SERVICE</i></b> .....	<b>22-1</b>
<b>23</b>	<b><i>ORDERING INFORMATION</i></b> .....	<b>23-1</b>
<b>24</b>	<b><i>INSTRUMENT SPECIFICATIONS</i></b> .....	<b>24-1</b>
<b>25</b>	<b><i>GEL CASSETTES SPECIFICATIONS</i></b> .....	<b>25-1</b>
	25.1 <i>3% Agarose, 90 bp-250 bp, Marker Q2 (internal standards)</i> .....	25-2
	25.2 <i>2% Agarose, 100 bp-600 bp, Marker V1 (internal standards)</i> .....	25-3
	25.3 <i>2% Agarose, 100 bp-600 bp, Marker M1 (external marker)</i> .....	25-4
	25.4 <i>1.5% Agarose, 250 bp-1.5 kb, Marker R2 (internal standards)</i> .....	25-5
	25.5 <i>1.5% Agarose, High-Pass, Marker R2 (internal standards)</i> .....	25-6
	25.6 <i>0.75% Agarose, 2-6 kb, Marker S1, Low Voltage (external marker)</i> .....	25-7
	25.7 <i>0.75% Agarose, 1-6 kb, Marker S1, Pulsed-Field (external marker)</i> .....	25-8
	25.8 <i>0.75% Agarose, 3-10 kb, Marker S1, Pulsed-Field (external marker)</i> .....	25-9
	25.9 <i>0.75% Agarose, High-Pass Protocols (4-20kb thresholds)</i> .....	25-10
	25.10 <i>0.75% Agarose, High-Pass Protocols (30-40kb thresholds)</i> .....	25-11
	25.11 <i>0.75% Agarose, 10-18 kb, Marker U1, Pulsed-Field (external marker)</i> .....	25-12
	25.12 <i>0.75% Agarose, 18-27 kb, Marker T1, Pulsed-Field (external marker)</i> .....	25-13
	25.13 <i>0.75% Agarose, 50kb Target, Marker Z1, Pulsed-Field (external marker)</i> .....	25-14
	25.14 <i>High Pass Plus, Marker U1, (external marker)</i> .....	25-15

# 1 Introduction

Thank you for purchasing the BluePippin from Sage Science. The BluePippin is an automated preparative gel electrophoresis system.

We urge you to read this manual to familiarize yourself with the system's capabilities and precautions.

## 1.1 System Overview

There are three components to the BluePippin system:

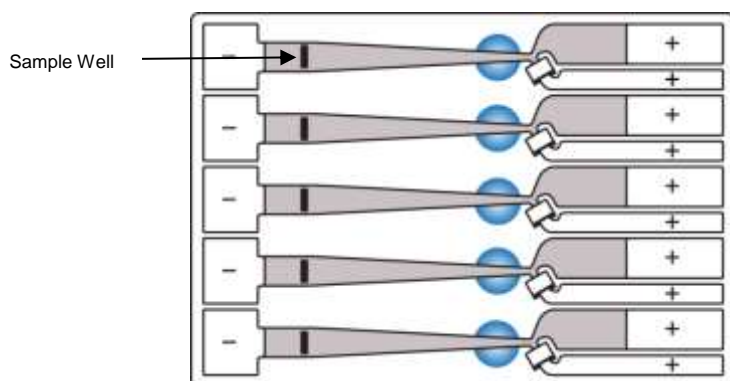
- **Instrument** – The instrument includes epifluorescence detectors, an electrophoresis power supply, an electrode array, and a Linux-based single-board computer. The system computer is accessed by an external LCD monitor, mouse, and keyboard. The electrode array is located in the top of the sliding instrument cover and is not user-accessible.
- **Software** – System software allows the user to enter parameters that define the DNA fragment size ranges to be collected. The software also logs fluorescence and electrical current data which may be analyzed in a review screen.
- **Gel Cassettes** – Pre-cast, disposable agarose cassettes are manufactured by Sage Science. Cassettes are supplied in kits that contain 10 cassettes and sufficient reagents to complete all collections. Kits have been developed to address DNA size range collections at various size ranges. Please refer to **Section 23** for kit descriptions and ordering numbers.



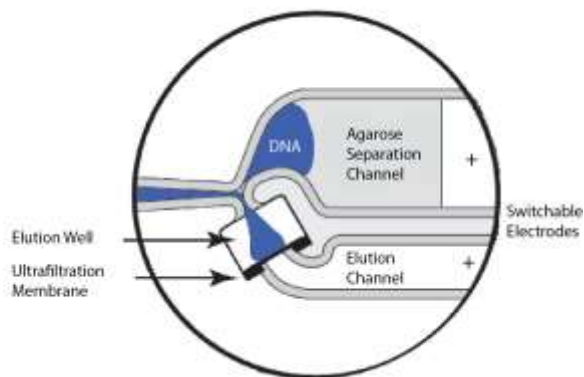
**The BluePippin Instrument**  
(the monitor and keyboard are not shown)

## 1.2 How the System Works

The BluePippin systems use pre-cast and disposable agarose gel cassettes. DNA fractions are collected by electro-elution into a buffer-filled well using a branched channel configuration with switching electrodes. The timing of switching is determined by measuring the rate of DNA migration with optical detection of labelled markers. The position of the detectors beneath the gel cassette is shown in the schematic below.



Gel Cassette Schematic



Close-up of the collection well

## 1.3 Collection Strategies

*Collection timing (start, duration, and end) is based on the factory calibration settings provided with a cassette definition file, and the user-input size range settings in software.*



**Note:** The agarose gel matrix does not contain intercalating dyes or gel stains, sample DNA is not viewable or monitored.

Size Selections can be undertaken using one of the following strategies:

- **Labeled internal standards** – Fluorescein labeled DNA internal standards are added to samples, and run ahead of the input sample. The rates of migration of the internal standards are used to determine the collection timing within the sample lane. Up to 5 samples may be run per cassette.



**Note:** The DNA sequence of internal standards may be found at [www.sagescience.com/support](http://www.sagescience.com/support), on the BluePippin resources page in the "Cassette Guides" section.

- **Labeled external marker** – The fluorescein labeled DNA marker is loaded in a single dedicated sample lane during a run. The rates of migration of the markers are used to determine the collection timing for the remaining sample lanes.
- **Timed runs** – The beginning and end time of elution (size selection) is set by the user. Neither internal standards or external markers are used.

## 1.4 Collection Types

The BluePippin can be programmed to size select either targeted fractions or “High-Pass” collections. The fragment size distributions are described below:

**1. Minimum Size Distribution (“Tight” setting).** The cassette lane will collect the narrowest distribution of fragments that is achievable given the resolution of the agarose gel concentration within the cassette. The distribution is Gaussian, and its range is typically  $\pm 16\%$  (CV 8%) of the median fragment size.



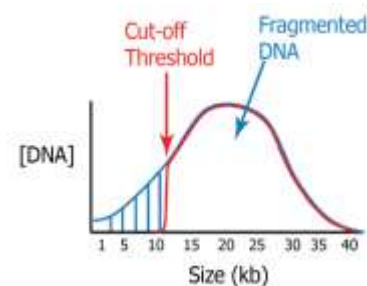
Tight

**2. Range Size Distribution (“Range” setting).** The cassette lane will collect a distribution of fragments between a starting base pair value and an ending base pair value. The actual start and end fragment sizes are typically within  $\pm 10\%$  of the base pair values input into the software.



Range

**3. High-Pass Size Distribution (uses “Range\*” setting).** The cassette lane will collect all fragments above a base pair threshold. The method increases the average fragment length of the collection depending on threshold value and input DNA distribution profile. High-Pass protocols require an external marker to be run in one lane.



High Pass

\* Although the cassette continues to collect until the end of the run, an end base pair value will auto-fill in the software protocol field. This value should be disregarded, and should not be changed by users.



## 2 Keys to Successful Collections

*It is recommended that users closely follow the instructions outlined in this manual until they become thoroughly familiar with the system. The Quick Guide (included with cassettes) provides protocol reminders, but is not intended for beginning users.*

*Keys to successful collections are outlined in the following sections:*

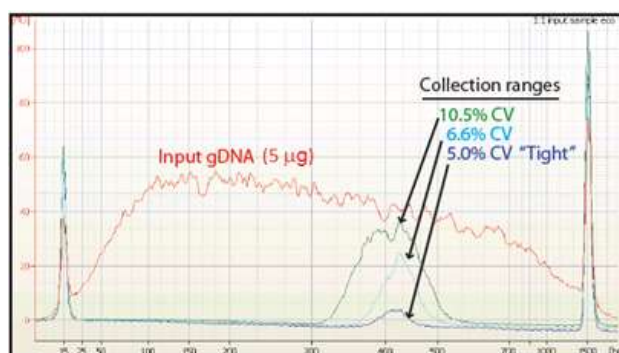
- **Purity of the input sample** (Section 6)
- **Optical Calibration** (Section 9)
- **Preparation of the cassettes** (Section 10)
- **Sample loading** (Section 11)

### 2.1 Common Misconceptions

Users should be aware of the following characteristics of the BluePippin System. These are part of normal operation of the system, but may seem counterintuitive at first.

#### 2.1.1 Narrowest is not always the best.

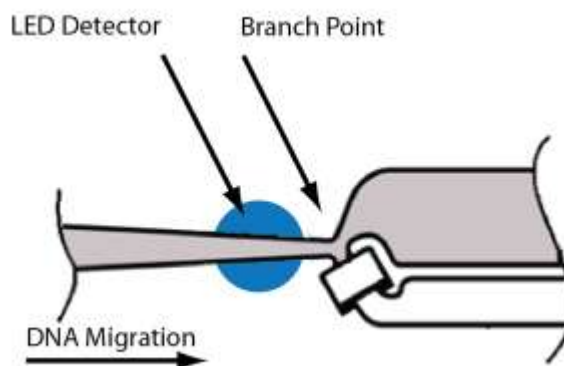
The BluePippin can produce very narrow size distributions from sheared genomic DNA. However, narrower size distributions will necessarily mean that a smaller fraction of the input DNA will be recovered. Users should broaden their collection ranges if the default tight settings do not produce enough DNA for their application.



**Figure 2.1.** A comparison of the relative sample yield between tight and broader range size selections of DNA.

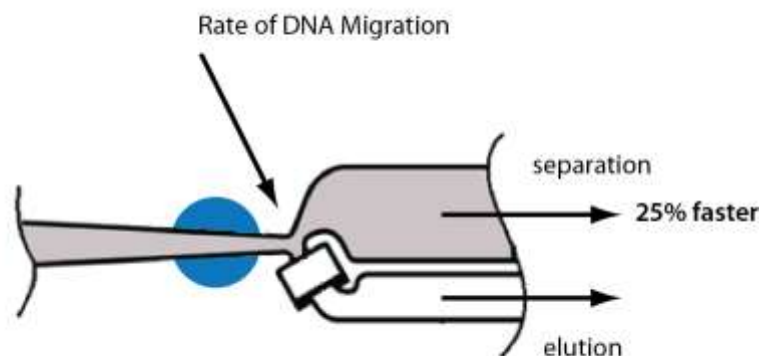
### 2.1.2 DNA undergoing elution is smaller than DNA at the detector.

The branch point between the separation and elution channels is downstream from the detector position. **Figure 2.2** shows a cassette channel to illustrate. During normal operation, the leading edge of the DNA fraction scheduled for elution passes the detector **before** the start of elution (by up to several minutes). This offset can give rise to the impression that sample elution is late, even in runs that are functioning properly.



**Figure 2.2.** An illustration of the time and base pair difference between the detector and branch point.

**2.1.3 The rate of electrophoresis is faster in the separation channel than in the elution channel.** This may cause misconceptions with regard to the timing of broad size selections. For instance, if one sample is programmed to select from 400 – 600bp, and a second sample is programmed to select from 200 – 600 bp, the narrower range will finish eluting before the broader one, even though both elutions complete collection at 600 bp. The collections of large DNA fragments, especially with pulsed –field protocols, can also appear counter-intuitive with respect to timing.



**Figure 2.3.** An illustration comparing the relative rate of electrophoresis in the separation and elution channels

## 2.2 Improving Sample Yield

Users should expect an intrinsic yield of between 50-80% of the sample input. This is based on product validation studies in which restriction fragments have been run and collected, and the respective DNA amounts compared.

Yield can be affected by DNA becoming lightly bound to the low molecular weight cut-off membrane in the elution well. At the end of the run, the BluePippin will briefly reverse field (for 5 seconds). This improves sample yield by up to 20%.



**Note:** The reverse field feature may be disabled in the Systems Option screen.

## 2.3 Improving Sample Yield for HMW DNA

Recovering high molecular weight DNA (>2 kb, using all 0.75% agarose gel cassettes) tend to have lower yields than low molecular weight size selection. The following additional steps are highly recommended to improve product yield:

1. Wait **at least 45 min** after termination of the run before removing eluted DNA (it is OK to leave samples in instrument for hours, i.e. for an overnight run).
2. Rinse the elution well with Tween solution. Tween solution (0.1% Tween 20 in 0.5X electrophoresis buffer) is provided by Sage Science with cassette kits used with HMW collections.

After removing the initial eluted volume:

- Remove the eluted sample from elution well at the end of the run
- Add 40µl of Tween solution (supplied with the gel cassettes) to the elution well
- Wait 1 minute
- Remove solution and pool with the original extracted sample, or process separately



**Important!** Qubit fluorometry is recommended for determining DNA concentrations of eluted samples.

UV absorbance-based methods (eg. Nanodrop) give inaccurate results on post-Pippin products: an artifact from the cassette manufacturing process interferes with accurate quantification.

## 3 Safety and Precautions

### Icons Used

In this manual, the following icons will be used to provide the user with information pertinent to the use of the BluePippin.



**Caution!** Warns the user that injury or instrument damage may occur if the contents of the warning are not properly followed.



**High Voltage!** Warns of the risk of electrical shock if the contents of the warning are not properly followed.



**Important!** Provide important information about the proper use of the system that may influence the quality of the result.



**Information.** Provides additional information regarding the function of the system or applications for which is used.

### Safe Use Guidelines

The BluePippin system is designed to operate under the following environmental conditions:

- Pollution Degree 2
- Installation category 2
- Altitude 2000m
- Indoor use
- Ambient temperature 17-32°C
- Humidity 10-80%, non-condensing

Standard laboratory precautions should be taken when handling BluePippin Gel cassettes and operating the BluePippin:

- Wear a lab coat, safety glasses, and gloves.
- Use in proximity of an eye wash station and/or running water.

## 4 Unpacking and Installation

### Unpacking the BluePippin

#### The BluePippin Instrument

The BluePippin instrumentation is shipped in two boxes: one will contain the BluePippin and Accessories and the second box will contain the computer monitor in the manufacturer's original packaging. With the boxes in the upright position, open and confirm that the following items are enclosed:

##### Monitor

- LCD computer monitor
- Video cable
- Power cord

##### BluePippin

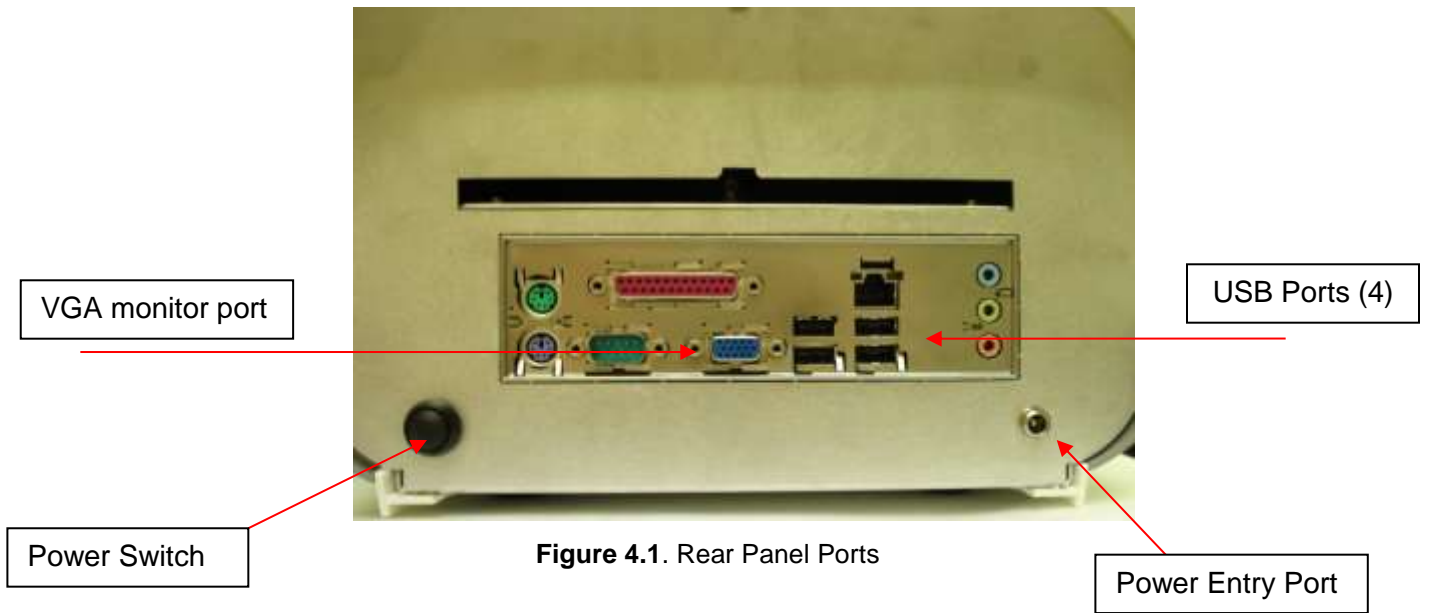
- BluePippin Instrument
- Accessory box
  - Computer keyboard, USB
  - USB computer mouse and mousepad
  - Power supply
  - Power cord
  - Rinse cassette (for maintenance of electrodes)
  - Calibration fixture (for setting optical baseline before each run)
  - Operations Manual

## Setting up the BluePippin

1. Remove the accessory box located on inside edge of box at the front end of the instrument. Remove the keyboard, mouse, and instrument power supply from their packaging.
2. Firmly grip both sides of the instrument and lift it from the foam packaging insert. The BluePippin weighs approximately 14 lbs. Place the Pippin on a table or bench top.
3. Remove the computer monitor from the manufacturer's box and connect the monitor to BluePippin using supplied video cable.
4. Connect monitor to power using power supply supplied with monitor.
5. Insert USB connector from computer keyboard into port located in the back of the Instrument.
6. Connect mouse to BluePippin via USB or PS2 connector at back of instrument.
7. Connect monitor cable into the video port located in the back of the instrument.
8. Connect BluePippin instrument to power via supplied power supply and cable. Power connector is at rear of instrument.
9. Press power switch located on the rear of the instrument, and wait for software to launch (approximately 30 seconds).

***The BluePippin is ready for use. After the power switch is activated, the software will launch – allow ~30 seconds.***

**Figures 4.1 and 4.2** on the next page show the rear panel of the BluePippin. **Figure 4.3** on the following page shows the front panel.





**Figure 4.3.** BluePippin front panel.

Indicator Light:  
Green when electrophoresis is  
underway (protocol is running).

Indicator Light:  
Blue when instrument is  
ready for use (power is on,  
and software is active).

USB Port



## Unpacking Gel Cassettes

Gel cassettes are shipped in boxes in the following configurations. Ensure boxes are in the upright position and confirm that the following contents are present:

**Dye-free gels with internal standards** (50 samples, size selections 90 bp – 1.5 kb):

- 10 foil-sealed gel cassettes (**store at R.T.**)
- 1 package of adhesive tape for sealing elution wells
- 1 reagent kit for 10 cassettes (**store at 4 °C**)
  - 550 µl DNA internal standards/ loading solution mix (10 µl/sample)
  - 40 ml of spare running buffer

**Dye-free gels with labeled external marker** (40 samples, size selections >2kb):

- 10 foil-sealed gel cassettes (**store at R.T.**)
- 1 package of adhesive tape for sealing elution wells
- 1 reagent kit for 10 cassettes (**store at 4 °C**)
  - 440 µl DNA size markers (1 x 40 µl load/ cassette)
  - 500 µl loading solution (10 µl/sample)
  - 2 X 800 µl 0.1% Tween 20 in running buffer\*
  - 40 ml of spare running buffer

\* Tween solution is used to improve DNA recovery of larger DNA fragments.



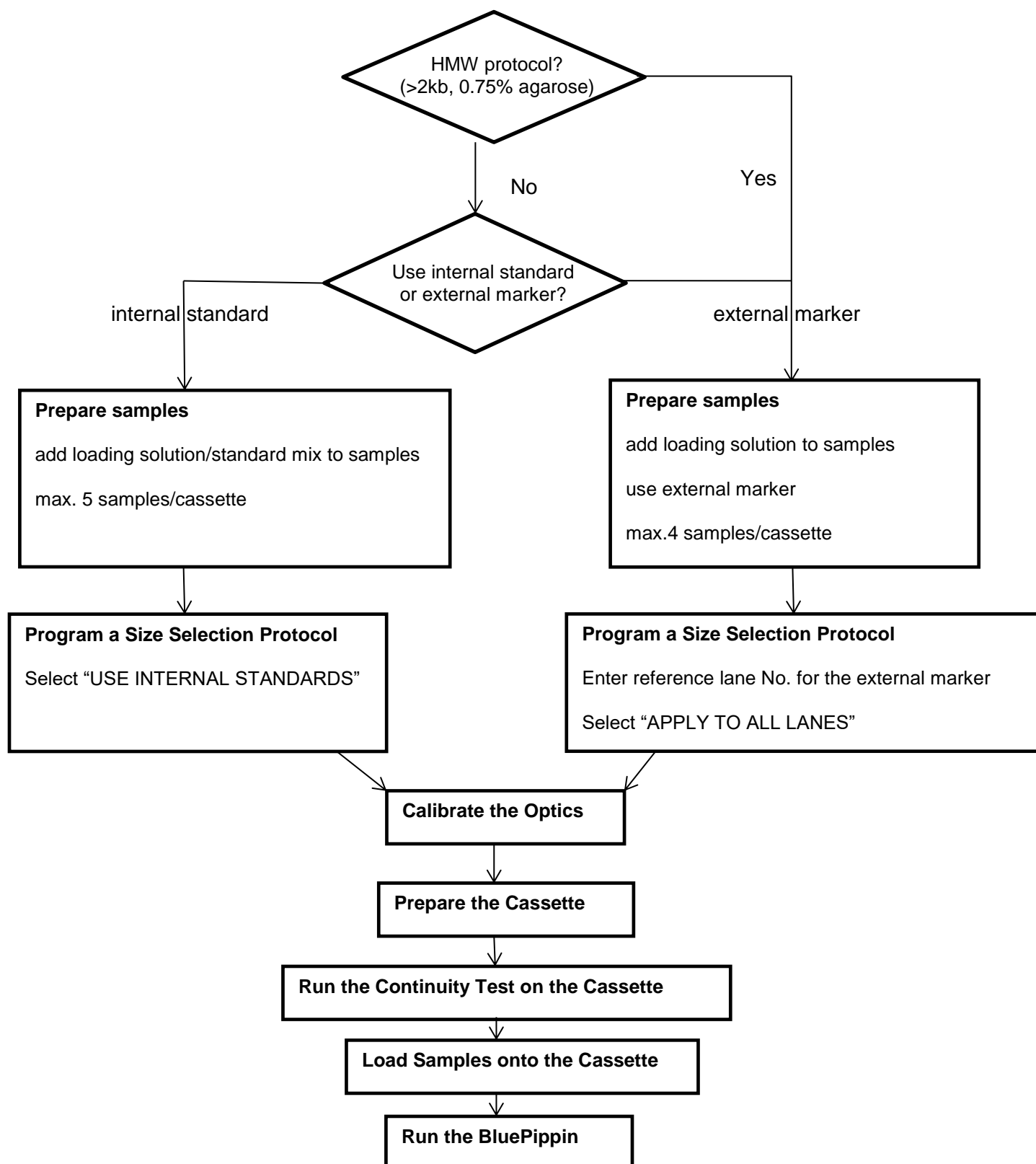
**Important!** *Fluorescein labels will degrade at room temperature – minimize time at RT for labeled standards and markers*

## Storage Conditions for Cassettes and Reagents

The following storage requirements should be observed:

- **Gel Cassettes**- Store at room temperature in the foil bags until ready for use.
- **Internal standards or external markers** – store at 4°C minimize time at room temperature.
- **Electrophoresis buffer** – may be stored at room temperature or 4 °C
- **Loading solution** – store at 4 °C. Bring to room temperature before use.
- **Tween Solution** – store at 4 °C

## 5 Workflow Summary



## 6 Sample Preparation

### Input Sample Characteristics

When running the BluePippin, characteristics of input DNA can affect separation resolution and efficiency of product recovery. The following general guidelines should be followed:

- **Ionic strength:** The ionic strength of the sample should be lower than the ionic strength of the buffer (80mM monovalent ions). High salt concentrations can result in slower than expected DNA mobility.
- **Protein in the sample:** DNA-binding proteins such as ligases or polymerases can affect the mobility of fragments during separation. Proteins can also reduce DNA recovery from the elution module by increasing the binding of DNA to the ultrafiltration membrane at the back of the elution module. For best results, samples should be de-proteinized prior to loading whenever possible.
- **Input DNA size distribution:** A knowledge of the input size distribution is obviously important to program accurate size selection settings. BluePippin cassettes are calibrated using the Agilent Bioanalyzer to evaluate input and product sizes, and so, for best results, input size distributions should be evaluated using the Bioanalyzer. For low concentration samples, the Agilent HS chip is very useful.

### Preparing DNA Samples for the BluePippin

1. Bring DNA sample up to 30µl with TE.
2. Bring internal standard mix (or loading solution if using an external marker) to room temperature.
3. For each sample, combine 30µl of DNA sample with 10µl of internal standard mix (or loading solution).
4. Mix samples thoroughly (vortex mixer). Briefly centrifuge to collect.

### Recommended sample Load Guidelines

Maximum Load: 5 µg sheared genomic DNA

Minimum Load: 15 ng, sheared genomic DNA

# 7 Programming Guide

The default screen on the BluePippin is a tabbed format. The Protocol Editor is the second tab.

## 7.1 Overview

The protocol editor tab is the screen with which users create new protocols, or edit existing protocols, for DNA size selection. A protocol is created for a cassette type (within the applicable target range) and is saved as a named protocol file with a “.ppprot” file extension. When running a cassette, an appropriate protocol file is selected and applied to the run.



## Protocol Parameters Detail

The protocol parameters section is shown below. Users will select a programming mode for each sample, and a lane to designate as a reference. Then, the size selection values are entered either as base pair (BP) values, or time values (hr:min:sec in “Time” mode).

Individual lanes may have different parameters and different modes.

Base Pair (BP)  
(Tight and Range modes) parameters

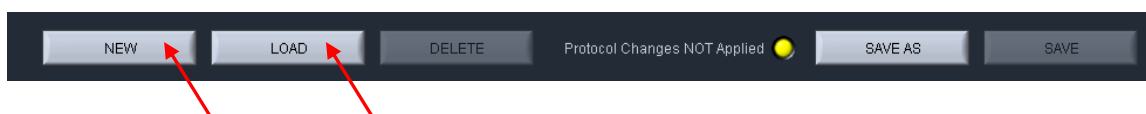
Programming Modes    Ref. Lane Indicators    Time mode parameters    Peak mode parameters

	Tight	Range	Time	Peak	Ref. Lane	BP Target	BP Start	BP End	BP Pause	T Start	T End	T Pause	BP Thresh	Start Exp	End Exp	Sample ID Template
5					off	0	0	0	0	00:00:00	00:00:00	00:00:00	0	0.90	1.10	
4					off	0	0	0	0	00:00:00	00:00:00	00:00:00	0	0.90	1.10	
3					off	0	0	0	0	00:00:00	00:00:00	00:00:00	0	0.90	1.10	
2					off	0	0	0	0	00:00:00	00:00:00	00:00:00	0	0.90	1.10	
1					off	0	0	0	0	00:00:00	00:00:00	00:00:00	0	0.90	1.10	

## 7.2 Programming Summary

The following is a summary of the steps required to program a protocol. Detailed instructions are provided in the subsequent sections.

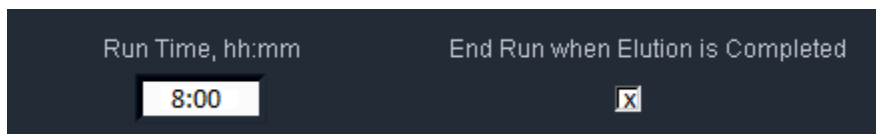
1. Click the “Protocol Editor” tab along top of the screen.
2. Select “NEW”, to create a new protocol. To edit an existing protocol, press the “LOAD” button to select the protocol to be edited.



3. Select a Cassette Type from “Cassette” menu, by clicking the folder icon. Protocol fields cannot be edited unless a cassette type has been selected.



4. Make sure the “End Run when Elution is Completed” box is checked (it should be checked by default. This will end the run at the earliest possible time, after the final elution is complete.



The screenshot shows a dark-themed software interface. On the left, there is a label 'Run Time, hh:mm' above a text input field containing '8:00'. On the right, there is a label 'End Run when Elution is Completed' above a checked checkbox.



**Note:** The Run Time value is a default value that ensures most runs will be completed if the “End Run when Elution Completed” box is left unchecked.

5. Program the size selection protocol, and assign the DNA reference marker lane. There are three modes of programming on the BluePippin:
  - **Tight** – collects minimum allowable distribution range of DNA fragments using the median target base pair value.
  - **Range** – allows users to select the range to be collected using starting and ending base pair values.
  - **Time** – allows users to program extractions using the starting and ending elution time (hr:min:sec) values only (**a reference DNA marker is not used**)



**Note:** Programming modes may be independently applied to individual sample lanes

6. Enter Sample ID or description (optional).
7. Press “Save As” button, enter a name for the protocol.

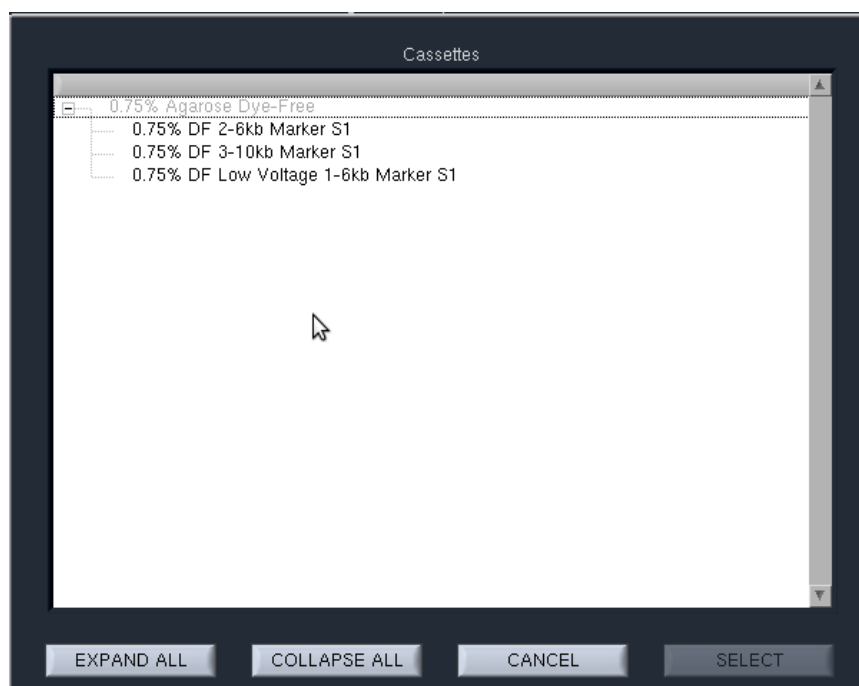
## 7.3 Selecting a Cassette Definition

Cassettes are selected from a menu tree with the 2 tiers. Users should select the appropriate definition from the 1<sup>st</sup> or 2<sup>nd</sup> tier:

- **1<sup>st</sup> Tier: % Agarose of the cassette**
  - 3%
  - 2%
  - 1.5%
  - 0.75%
- **2<sup>nd</sup> Tier: Additional cassette definitions**

If a cassette type (e.g. 0.75% Agarose, illustrated below) has more than one definition, the definition is selected from the second tier of the menu tree.

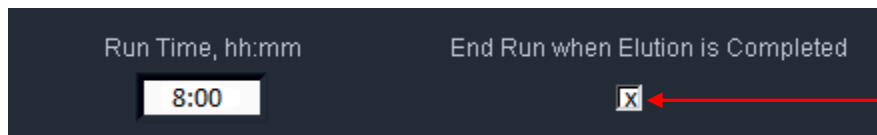
  - 1 – 6 kb Low Voltage
  - 1 – 6 kb Pulsed Field
  - 3 – 10 kb Pulsed Field
  - 18 – 27 kb Pulsed Field
  - 50 kb Pulsed Field





## 7.4 Run Times

Protocols can be run with widely variable run times – up to 7 hours for low voltage runs. The Run Time Selector consists of a field and a check box, with the following default settings.



Run Time, hh:mm	End Run when Elution is Completed
8:00	<input checked="" type="checkbox"/>

The 8 hour default value in the Run Time field ensures that a run is not unintentionally ended early. The checked box in the “End Run when Elution is Completed” field will automatically end a run when every lane that has a programmed elution has completed its collection.

To end a run manually, go to the Main Tab and press “STOP”. Completed elutions may be verified in the Lane Status Panel if there is a value in the “Elution Timer” field and the “Separate” button is lit:



Elution Timer	Reference	Idle	Separate	Elute
00:05:01	1		<input checked="" type="checkbox"/>	

## 7.5 Assigning a Reference Marker – external marker

1. Determine the lane into which the reference marker will be loaded.
2. In the protocol editor, enter the reference lane number into the “Reference Lane” field. Click “APPLY REFERENCE TO ALL LANES”. **Figure 7.1** shows the proper settings for running a DNA marker in lane 1, with programmed “Tight” extractions in lanes 2-5.

Lane to which marker has been loaded.

Remaining lanes will reference off of marker lane

Reference Lane

1

APPLY REFERENCE TO ALL LANES

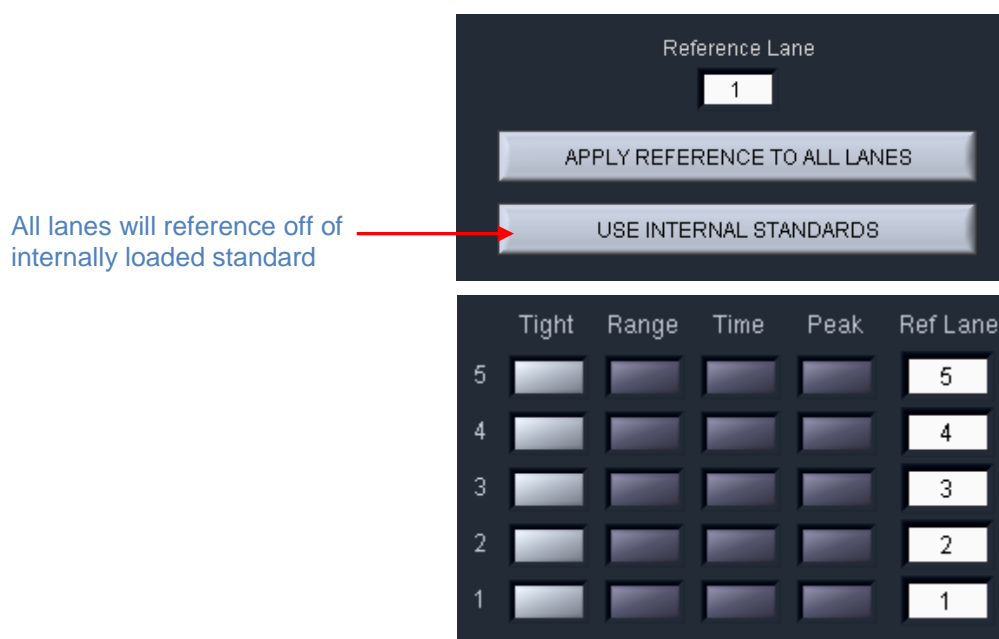
USE INTERNAL STANDARDS

	Tight	Range	Time	Peak	Ref Lane
5					1
4					1
3					1
2					1
1					1

**Figure 7.1.** The correct configuration for a protocol with an external marker loaded in lane 1.

## 7.6 Assigning Reference Markers – internal standards

1. Markers must be loaded into every lane with the sample (30 ul of sample with 10 ul of internal standard loading solution).
2. In the protocol editor, press “USE INTERNAL STANDARDS”. This will auto-fill the “Ref Lane” fields with reference marker internal to the sample. The software will determine the timing of elution based on the migration of the DNA marker within its own lane.
3. **Figure 7.2** shows the correct assignment of marker lanes for internal standard runs.



**Figure 7.2.** The correct configuration for a protocol using internal standards.



**Important!** When using internal standards all samples must be prepared with the BluePippin internal standard loading solution which is formulated for the cassette type and size range to be used. The internal standard loading solution contains the markers.

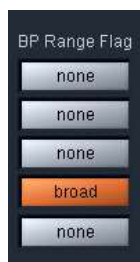
## 7.7 Warnings and Indicators

### BP Range Flag

When a “**Tight**” collection mode (minimum size range) has been selected for sample lane, the “BP Range Flag” field for that sample will display “tight” and a green color.



When a “**Range**” collection mode (larger than the minimum) has been selected for a sample lane, the “BP Range Flag” field for that sample will display “broad” and an orange color.



### Narrow Range Flag

If the “Range” collection mode is selected, and the size range is narrower than the minimum, a yellow “narrow” flag will appear.



**Note:** A collection range below the minimum will not collect the fragment range selected. Rather, the range will be reflected as the minimum allowable (as defined by the “Tight” setting) albeit with a lower sample yield that can be achieved by the “Tight” setting.

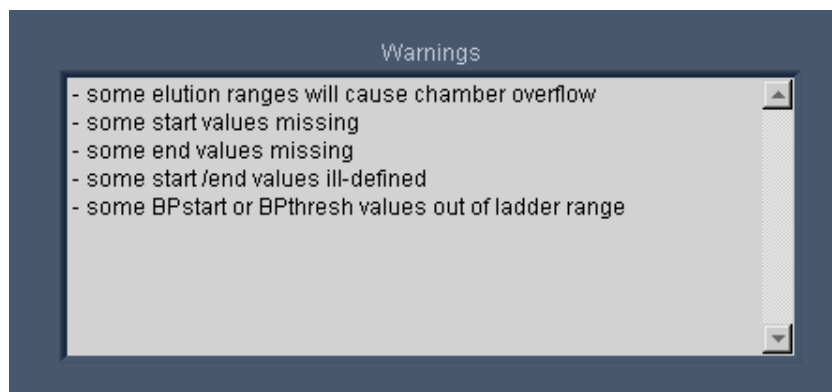
### Pause Enabled Indicator

If the pause feature has been entered for a sample lane, “Pause On” indicator will be displayed.



### Warnings Text Box

If there are errors or exceptions within a programmed protocol, a message will appear in the Warnings text box identifying the nature of the discrepancy.



## 8 Programming Size Selections – Tight, Range, and Timed Modes

### 8.1 Tight Mode – programming minimum size range collections

The “Tight” programming mode is a method for selecting DNA size range collections by entering a target base pair value in software. The system will collect the minimum fragment distribution that is possible, centered on this base pair value.

For size reference, either internal DNA standard or external DNA markers (run in a separate lane) may be used, depending on cassette type and/or application. Cassette kits for smaller DNA size range collections (90-1500 bp) use internal standards and larger collections (>2 kb) require use of one cassette lane to run and external reference marker. Assignment of reference DNA is detailed in **Sections 7.5 and 7.6**.

In the protocol editor:

1. **Select an appropriate cassette type for size selection**, if a new protocol is being created.
2. **Assign the internal or external reference DNA.**
  - a. For cassettes using **internal standards**:
    - i. press the “USE INTERNAL STANDARDS” button.
  - b. For cassettes using an **external marker** lane:
    - i. enter the lane into which the marker will be loaded, into the “Reference Lane” field (“1” is the default value)
    - ii. press the “APPLY REFERENCE TO ALL LANES” button.
3. **Select the “Tight” programming mode.** Click the “Tight” button for every lane in which the “Tight” fragment range will be collected. If using an external marker, make sure no collection modes are selected for that lane.
4. **Enter a value in for the “BP Target”.** This value should represent the median value for the desired size range to be collected. The actual range to be collected will auto-fill the “BP Start” and “BP End” fields.

5. **(Optional) Enter a BP pause value.** This is not recommended for Tight mode. See Section 8.2, below, for a description of this feature.
6. **Enter the Sample ID information.**
7. **Save.** After programming a new protocol, or editing an existing one, the protocol file must be saved prior to use. If the protocol is new, press “Save”. If a protocol has been edited, a yellow alert will be displayed in the “Protocol Changes Not Applied” field. “Save” will save the file under the previously saved name, and “Save As” will allow a new name for the file to be applied.



All protocol files are saved in a file directory, /home/pippin/BluePippin/Protocols, and may be accessed in the File Manager tab.

## 8.2 Range Mode— programming broad size range collections

The “Range” programming mode is a method for selecting DNA size range collections by a starting and ending base pair value in software. The system will collect the fragment range between the start and end base pair values. This option should be used when collections that are broader than are provided by the “Tight” setting are needed.

For size reference, either internal DNA standard or external DNA markers (run in a separate lane) may be used, depending on cassette type and/or application. Cassette kits for smaller DNA size range collections (90-1500 bp) use internal standards and larger collections (>2 kb) require use of one cassette lane to run and external reference marker. Assignment of reference DNA is detailed in **Sections 7.5 and 7.6**.

In the protocol editor:

1. **Select an appropriate cassette type for size selection**, if a new protocol is being created.
2. **Assign the internal or external reference DNA.**
  - a. For cassettes using **internal standards**:
    - i. press the “USE INTERNAL STANDARDS” button.
  - b. For cassettes using an **external marker** lane:
    - i. enter the lane into which the marker will be loaded, into the “Reference Lane” field (“1” is the default value)
    - ii. press the “APPLY REFERENCE TO ALL LANES” button.

7. **Select the “Range” programming mode.** Click the “Range” button for the lane from which the cut will be extracted. If using an external marker, make sure no collection modes are selected for that lane.
8. **Enter range values in the “BP Start” and “BP End” fields.** The median target value of the collection range will auto-fill the “BP Target” field.
9. **(Optional) Enter a BP pause value.** . If a value is entered into the pause field, the system will pause when that (estimated) base-pair value has been reached. The pause will allow a user to remove the fraction, and then resume the elution and collect a second fraction.

The BP Pause value must be within the programmed elution range (between BP Start and BP End). The pause function temporarily turns off power to the electrodes and suspends run timers, allowing users to remove the sample, rinse the elution well (if desired), and then resume the instrument run to collect additional sample.

This will result in the collection of two contiguously sized fractions, with overlapping fragment sizes. Two collections of a paused “Tight” setting (not recommended) will yield two nearly identical samples each with half the amount of a single Tight collection. If users were to pause at the midpoint of progressively wider “Range” settings, the amount of overlap in the collections would become progressively smaller.



**Important!** A pause will require the user to manually resume the protocol from the Main Screen controller. The instrument lid may be opened during the pause, and sample retrieved.

## 10. Enter the Sample ID information

11. **Save.** After programming a new protocol, or editing an existing one, the protocol file must be saved prior to use. If the protocol is new, press “Save”. If a protocol has been edited, a yellow alert will be displayed in the “Protocol Changes Not Applied” field. “Save” will save the file under the previously saved name, and “Save As” will allow a new name for the file to be applied.



All protocol files are saved in a file directory, /home/pippin/BluePippin/Protocols, and may be accessed in the File Manager tab.



## 8.3 Time Mode – programming timed collections



**Important!** *The time mode does not reference a standard. Cassette to cassette variability and environmental running conditions will cause a wide variation in selection accuracy.*

The “Time” programming mode is a method for crude DNA collections where accuracy of the fragment size or range is not critical. The system will collect the fragment range between the elution start time and elution end time.

In the protocol editor:

1. **Select the “Time” programming mode.** Click the “Time” button for the lane from which the cut will be extracted. A DNA marker reference standard is not required.
2. **Enter a time values in the “T Start” and “T End” fields.** Sample elutions will occur at exactly those times after the start of the run
3. **(Optional) Enter a Time pause value.** If a value is entered into the pause field, the system will pause when that time has been reached. The pause will allow a user to remove the fraction, and then resume the elution and collect a second fraction.

The Pause value must be within the programmed elution range (between T Start and T End). The pause function temporarily turns off power to the electrodes and suspends run timers, allowing users to remove the sample, rinse the elution well (if desired), and then resume the instrument run to collect additional sample.

This will result in the collection of two contiguously sized fractions, with overlapping fragment sizes. Two collections of a paused “Tight” setting (using comparable timing, this not recommended) will yield two nearly identical samples each with half the amount of a single Tight collection. If users were to pause at the midpoint of progressively wider “Range” settings, the amount of overlap in the collections would become progressively smaller.



**Important!** *A pause will require the user to manually resume the protocol from the Main Screen controller. The instrument lid may be opened during the pause, and sample retrieved.*

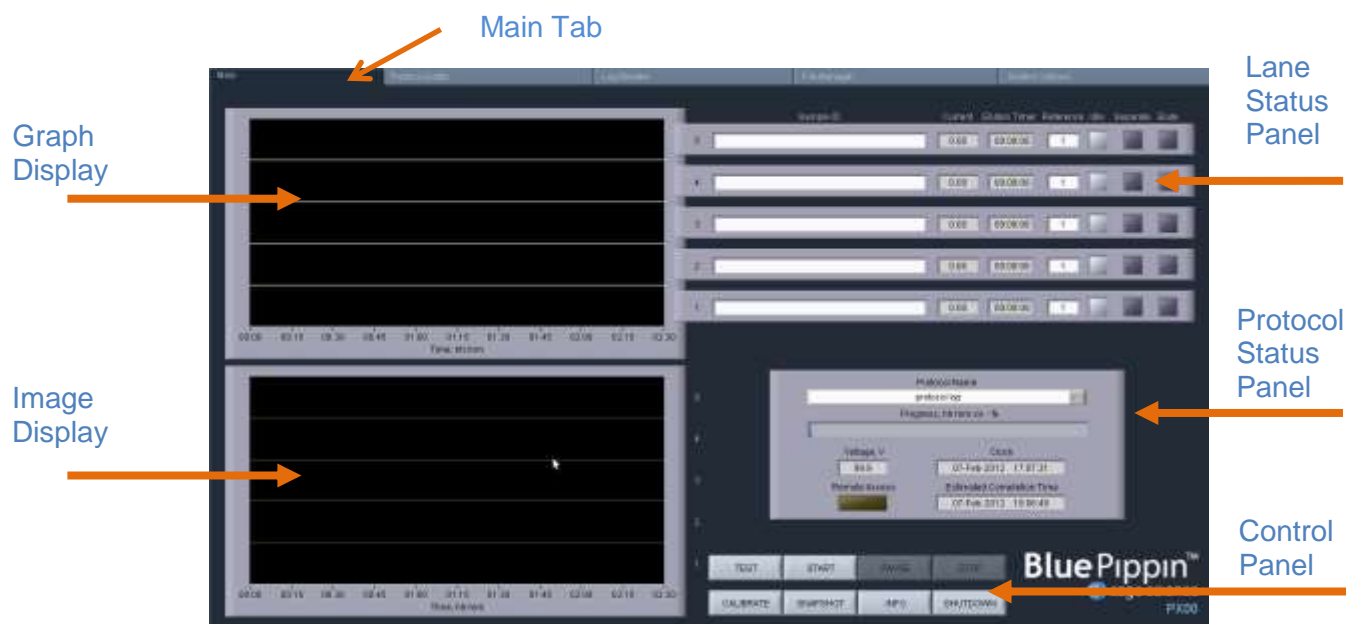
4. **Enter Sample ID information.**
5. **Save.** After programming a new protocol, or editing an existing one, the protocol file must be saved prior to use. If the protocol is new, press “Save”. If a protocol has been edited, a yellow alert will be displayed in the “Protocol Changes Not Applied” field. “Save” will save the file under the previously saved name, and “Save As” will allow a new name for the file to be applied.



All protocol files are saved in a directory, /home/pippin/BluePippin/Protocols, and may be accessed in the File Manager tab.

## 9 Optical Calibration

The BluePippin optical system must be calibrated before every run. The instrument is supplied with a calibration fixture that fits over the LED detectors on the optical nest.



1. Press the Main Tab
2. Press "CALIBRATE" on the Control Panel



3. An “LED Calibration” window will launch. The “Calibration Status” field will contain the message “Ready for Calibration”.

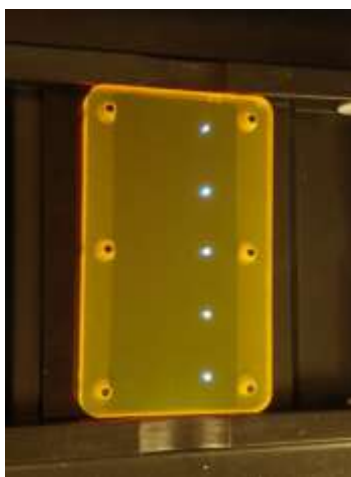
Place fixture on the optical nest so that all five LED detectors are covered. The dark side of the fixture must be down (closest to the LEDs):



Top

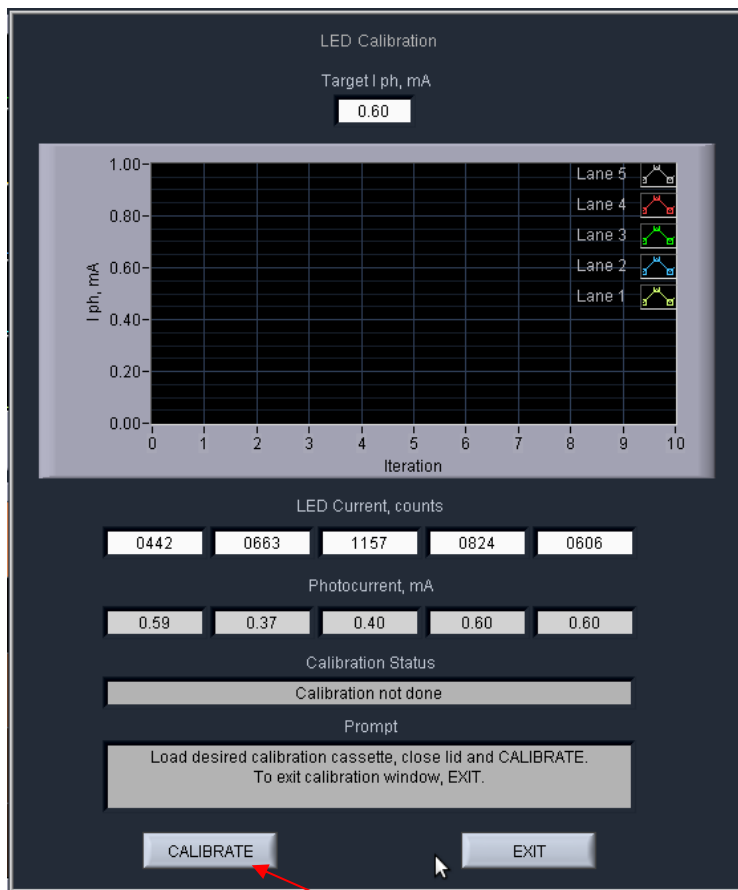


Bottom

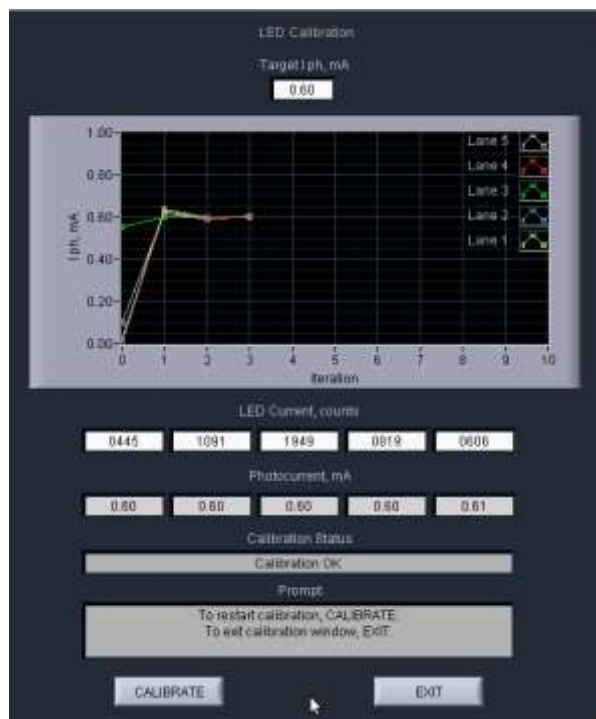


Correct Position  
on Optical Nest

4. Close the lid.
5. Press "CALIBRATE"



5. The Calibration status will read "Calibration Underway" and the LED photocurrents will automatically adjust to a factory setting. Once calibration is successful the "Calibration Status" field will contain the message "Calibration OK"

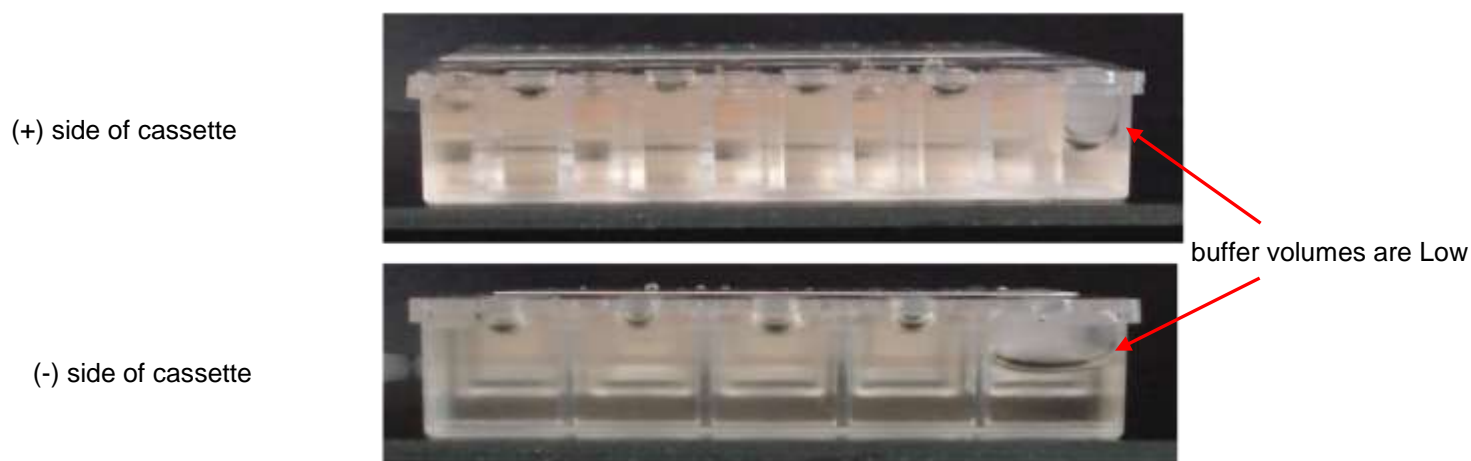


6. Press "EXIT" to return to the Main Tab.
7. Open the lid and remove the fixture.

# 10 Preparing a Cassette

## 10.1 Visually Inspect the Cassette

1. **Remove the cassette from foil packaging.** Foil package is scored at one end to allow tearing.
2. **Inspect the levels of buffer in the buffer reservoirs.** Tip the cassette to consolidate any bubbles in the reservoirs, then hold the cassette in a horizontal position and look at the reservoirs from the top and bottom edges. Reservoirs should be nearly full of buffer and roughly equal in volume across the cassette. If the buffer level in any reservoir appears less than 50% full (compared with its neighbors), the low reservoir should be refilled with the supplied electrophoresis buffer prior to running. When refilling, a visual check of buffer levels is sufficient -- a measured volume is not required.



**Figure 10.1.** Low buffer levels in cassette buffer chambers.

3. **Inspect the gel columns.** Look for obvious breakage of the agarose column in each channel.



**Important!** *If there is obvious breakage, do not use the lane. Remaining lanes can be used.*

4. **Inspect bottom of cassette for bubbles in the detection region of the gel columns.** If a cassette has been jarred during shipping, the agarose column can delaminate from the plastic bottom of the separation channel, forming a thin flat bubble between the gel column and the bottom of the channel. If this happens in the region used by the optical detector (see illustration), DNA detection will be extremely unreliable. ***If a lane with such a bubble is used for the reference marker, the markers will not be properly identified and sample collection will occur at the wrong time or fail altogether.*** (Only the optical properties of the channel are affected -- electrophoretic properties of the channel are unaffected, since the DNA travels through the center of the gel column, above the bubble.) To find such bubbles, turn the cassette upside-down, and view the bottom of the channels under a strong light, while tilting the cassette back and forth (see **Figure 10.2**, below). **Figure 10.3** shows the region of optical detection.



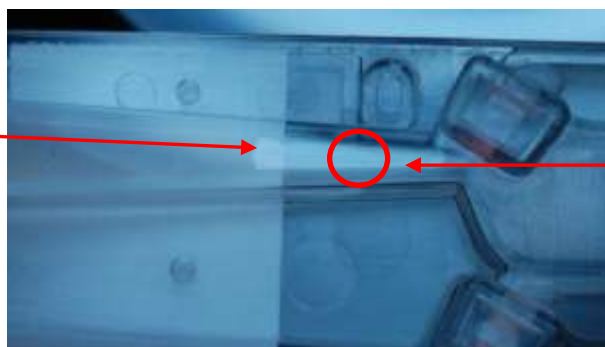
**Important!** If a bubble is observed, do not use the lane to run the reference marker or for peak capture mode applications. It may be used for size selections using an external marker in a different reference lane (tight or bp range modes).



**Important!** Flat bubbles between the top surface of the gel column and the plastic top of the channel will NOT affect run quality or optical detection. They may be used for markers or sample without any adverse effects.

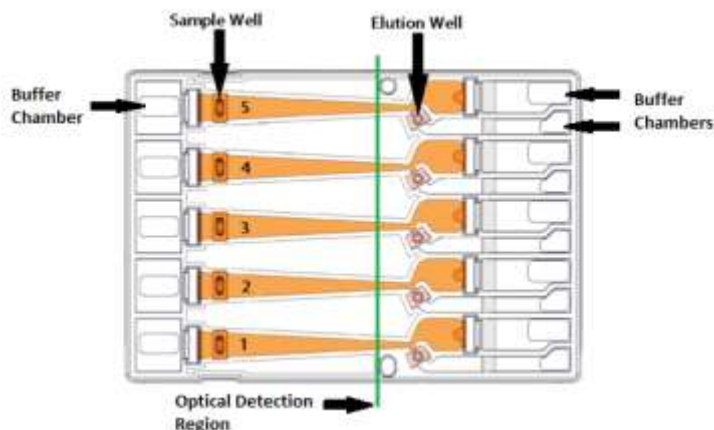
#### Agarose Delamination

Do not use this lane for samples with internal standards or external DNA marker



Optical Region

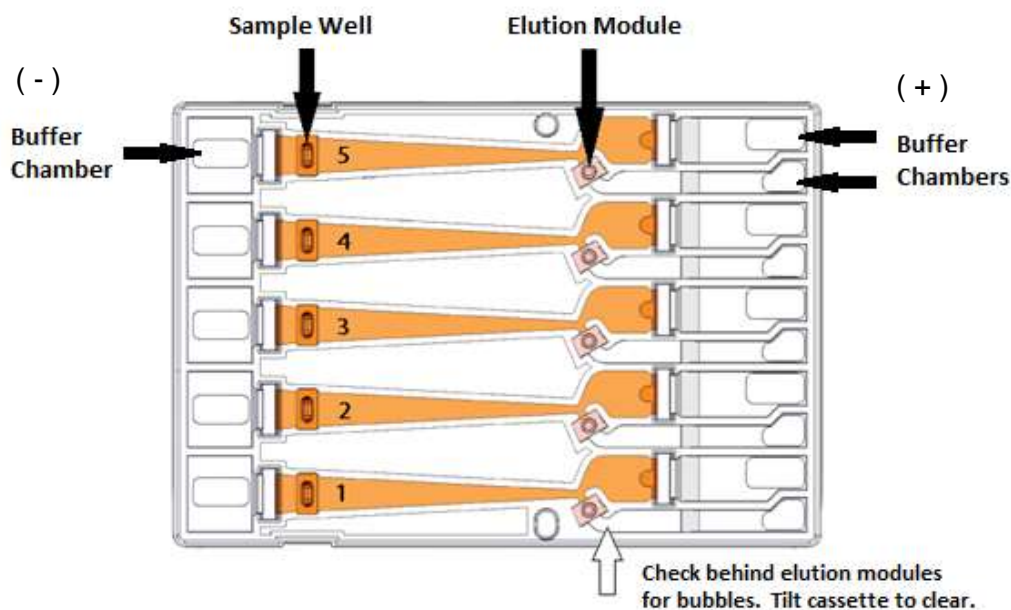
**Figure 10.2.** Bubble in optical path. Do not use the lane for the DNA reference marker.



**Figure 10.3.** The region of optical detection

## 10.2 Prepare the Cassette for Loading

1. **Dislodge bubbles from behind the elution wells.** Return the cassette to the right-side up position. Tilt the cassette, sample well side down, to release any trapped bubbles behind the elution modules into the (+) buffer chambers. Gently tap the cassette if necessary. **Figure 10.4**, below, shows location to check for bubbles.



**Figure 10.4.** A schematic of a Gel Cassette.

2. **Place Cassette into the Pippin optical nest.** The cassette should be placed into the nest in the orientation shown in **Figure 10.4**, above, with the sample wells to the left side of the nest. When inserting the cassette into the nest, keep the (-) buffer chambers tilted down so that the bubbles in the elution reservoirs won't be trapped behind the elution modules.



**Important!** Be sure the cassette is fully seated into the bottom of the nest. Detection of DNA within the cassette will fail if the bottom of the cassette is not properly seated against the optical region.

3. **Remove adhesive strips from cassette.** Place one hand on the cassette, and hold it firmly in the nest. Grab the white tabs of the tape and pull the strips firmly and slowly toward the front of the BluePippin until they are removed.
4. **Remove buffer from elution modules and replace with 40µl of fresh electrophoresis buffer.** Replenishing the buffer ensures proper electrophoretic continuity. When refilling empty modules, place tip all the way into the module and slowly fill from the bottom, withdrawing the pipette tip while dispensing, and taking care not to generate any bubbles that can occlude the current path. Use spare buffer that has been supplied with the cassette package, or pipette from the buffer chambers.





**Important!** Make sure that the pipette tips used for step 4 extend all the way to the bottom of the elution modules without sealing the elution port opening. If the tips seal the port opening, it will be extremely difficult, or impossible, to empty and refill the elution module completely. Test tip fit using the empty rinse cassette supplied with the instrument.



**Note:** The total volume of the elution module when filled to the top is 65 $\mu$ l. The specified starting volume of 40 $\mu$ l only partially fills the module.

5. **Seal the elution wells with the adhesive tape strips.** Tape for sealing the elution wells are supplied with cassette packaging. Long elutions will cause the elution wells to overflow if not sealed. Place tape over the elution wells and rub firmly to fix the tape in position. For best results, rub the tape at the boundary of the well with a smooth hard object such as the back end of a lab marker pen.
6. **Check the buffer levels in the sample wells.** Sample wells should be completely filled to the top with buffer. If any wells are under-filled, top them off with additional buffer.



**Note:** The total volume of the sample well is approximately 70 $\mu$ l.

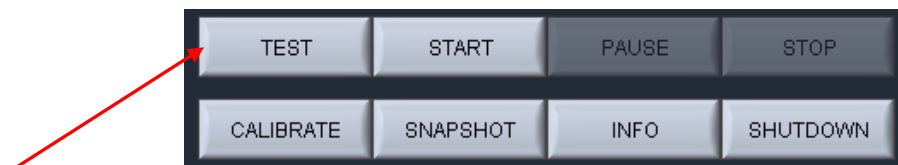
### 10.3 Continuity Test

The continuity test measures the current in each separation and elution channel and determines whether they are within the expected values for a successful run.

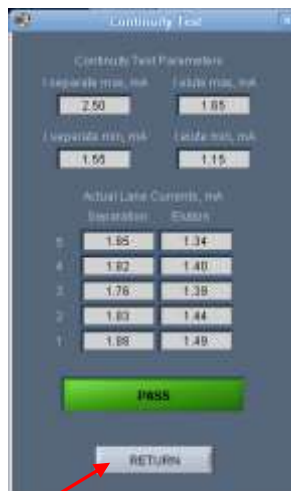


**Important!** Temperature affects electrical current readings. If cassettes have been refrigerated, they will fail the current test until the cassette is at least 17°C (62°F). Should this be the case, wait until the cassette temperature has equilibrated to room temperature and re-test.

1. **Press “Test”.** With the cassette in the optical nest, close the lid and press “TEST” on the controller on the Main Tab.

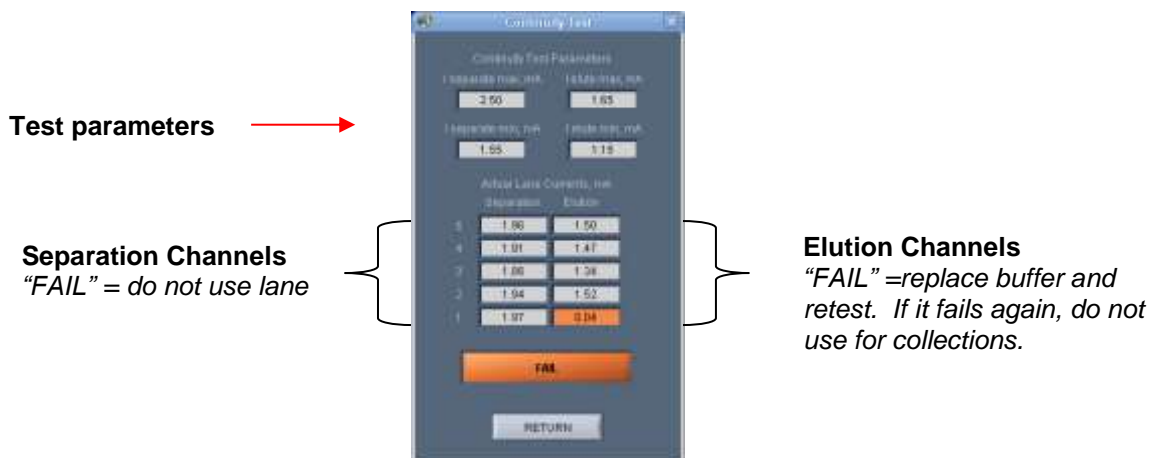


2. **Continuity Test will Automatically Run.** The continuity test screen will launch. The separation and elution channel test parameters are displayed and the electrical current results will be listed after several seconds. If the test returns a “PASS” message, press “RETURN” and continue to baseline calibration.



### Failed Continuity Tests

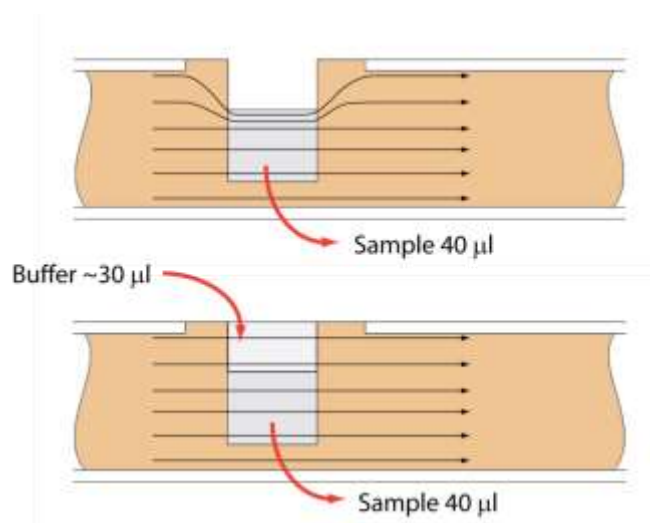
1. A failed test is indicated by a “FAIL” message, and the failed channel is highlighted in orange. **Figure 10.5** shows a failed test screen (elution channel in lane 1).
2. **If a Separation lane has failed (left column) continuity.** Do not use that lane. Remaining passing lanes can be used if necessary.
3. **If an Elution channel (right column) has failed continuity.** Replace buffer in the elution module of the failed lane and refill with 40 ul of fresh electrophoresis buffer and retest the cassette. If the lane fails again, do not use the lane for collections.



**Figure 10.5.** The Continuity Test screen. The elution channel in lane 1 has failed.

# 11 Loading Samples

Proper sample loading is critical for best performance of BluePippin cassettes. For maximum reproducibility and accuracy, the sample should travel through the central section of the gel column, and should be bounded on all four sides by uniformly conductive media – either gel or electrophoresis buffer. The goal of the loading procedure is to produce this geometry in the sample loading well, as illustrated in the bottom section of **Figure 11.1**. Properly prepared samples will be 40  $\mu$ l in total volume consisting of 30  $\mu$ l of DNA mixed with 10  $\mu$ l of BluePippin internal standard mix or loading solution. The loading solution contains concentrated Ficoll as a densifying agent (see the previous chapter on Sample Preparation for details), and therefore the samples will sink and form a high density layer beneath the electrophoresis buffer when pipetted slowly into the sample wells. If there is insufficient conductive buffer over the sample, the electrophoretic forces lines will curve upward as the sample exits the well (see **Figure 11.1**, upper section), and the sample will be drawn to the top of the cassette where it can travel out of the gel into the gap between the gel column and the plastic top of the channel. Sample moving in this gap will travel at a different rate than the sample inside the gel column, and will lead to elution of undesired size fractions in the eluted material. In such cases, the contaminating DNA will usually (but not always) be higher in molecular weight than the selected DNA.



**Figure 11.1.** An illustration of the electrophoretic effect on a DNA sample when a sample well is not completely filled.

1. **Re-check the buffer level in the sample wells.** Make sure that sample wells are completely full to the top with electrophoresis buffer. Top off with additional buffer, if necessary. The total volume of the sample well is 70  $\mu$ l.
2. **Remove 40 $\mu$ l of buffer from the first sample well, and load 40 $\mu$ l of sample (or marker) into that well.** Take care not pierce the agarose with the pipette tip. There is gel on all sides and bottom of the sample well. In addition, there is an agarose “chimney” surrounding the top of the sample well that protrudes up through the cassette cover (see **Figure 11.1**). When removing buffer, some users find it useful to immerse the pipette tip just below the surface of the buffer and follow the liquid level down with the tip as the buffer is removed. When buffer removal is completed, there will be ~30 $\mu$ l of buffer left in the well. When adding sample, place tip of pipette just below the surface of the buffer, and follow the liquid level up with the tip as the well fills. Don’t be concerned if the sample well slightly overfills. The density of the sample will allow it to sink before it can flow out of the well.
3. **Repeat step 2 for remaining wells.**

## 12 Running a Protocol

The default screen on the BluePippin is a tabbed format. The Main Tab is the first tab and the default screen.

### 12.1 Overview

The Main Tab is the screen with which users load protocols, run the instrument, and monitor optical signal and electrophoresis.



## 12.2 Starting a Run



**Important!** The BluePippin should be optically calibrated prior to every run. If this has not been done, refer to **Chapter 9** for instructions.

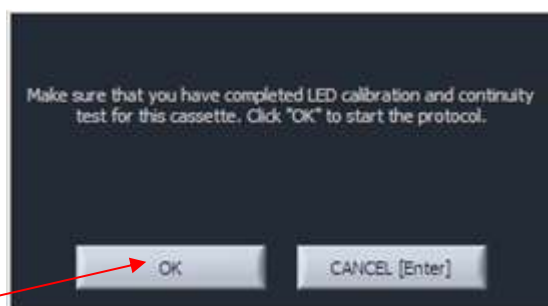
1. If necessary, select the protocol to be run from the “Protocol Name” drop down menu in the Protocol Status Panel. The last protocol that has been programmed will automatically be loaded. **See Chapters 7 and 8** for instructions on programming.



2. Load a properly prepared cassette (**Chapter 10**) into the optical nest. Typically, users will load samples while the cassette is on the nest (see **Chapter 11**). Ensure that adhesive tape has been placed over the elution wells.
3. Press “START” on the Control Panel.

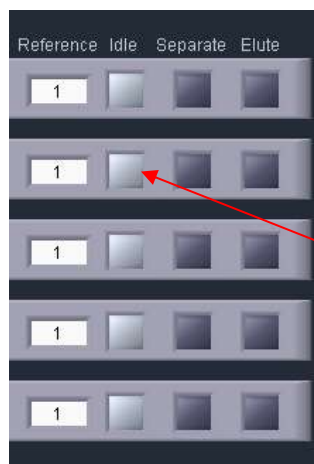


4. A pop-up window will appear to remind users that the LED calibration and continuity tests were not inadvertently skipped. Press “OK” to start the run.



## 12.3 Monitoring a Run

The Lane Status Pane has three indicator lights per lane. When the instrument is idle, all “Idle” indicator lights are light gray.



When a protocol is running, the following indicator panel will be displayed:

	Sample ID	Current	Elution Timer	Reference	Idle	Separate	Elute
5	Sample D	2.21	00:05:01	1		Green	
4	Sample C	2.31	00:04:01	1			Orange
3	Sample B	2.29	00:03:01	1		Green	
2	Sample A	2.43	00:02:01	1		Green	
1	Reference	2.27	00:00:00	1		Green	

- **Green, Separation.** If a lane is separating fragments, the “Separate” indicator will be green.
- **Orange, Elution.** If a lane is eluting a size range, the “Elute” indicator will be orange, and the elution timer will be active.

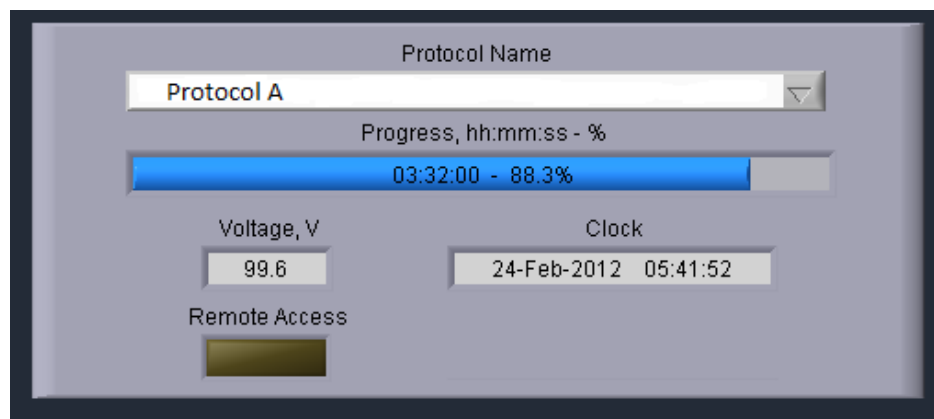


**Note:** If there is a time value in the “Elution Timer” field, and the orange “Elute” indicator is no longer lit, then the elution has been completed for that lane.

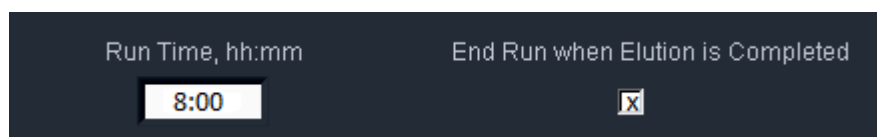
The Elution Timer records the length of time of the elution. When elution is complete, electrophoretic path will switch to either the Idle state (if the “End Run When Elution is Completed” box is checked when the protocol was programmed. See **Figure 12.1**, below) or back to the “Separate” separation channel (if the box was not checked). The elution timer will show the value of the total elapsed elution time.



Run progress is monitored in the Protocol Status panel. The percent completion of the run time is indicated by a progress bar. The run time is determined by the “Run Time” field in the protocol editor (see **Figure 12.1**, below). However, the run may end at a sooner time if all elutions have been completed.



**Important!** If the “End Run when Elution is Completed” is checked in the protocol editor, the run may terminate before the progress bar reaches 100%



**Figure 12.1** The Run Time field in the protocol editor. This time value is used to determine the progress of the run.



## 12.4 Log Files

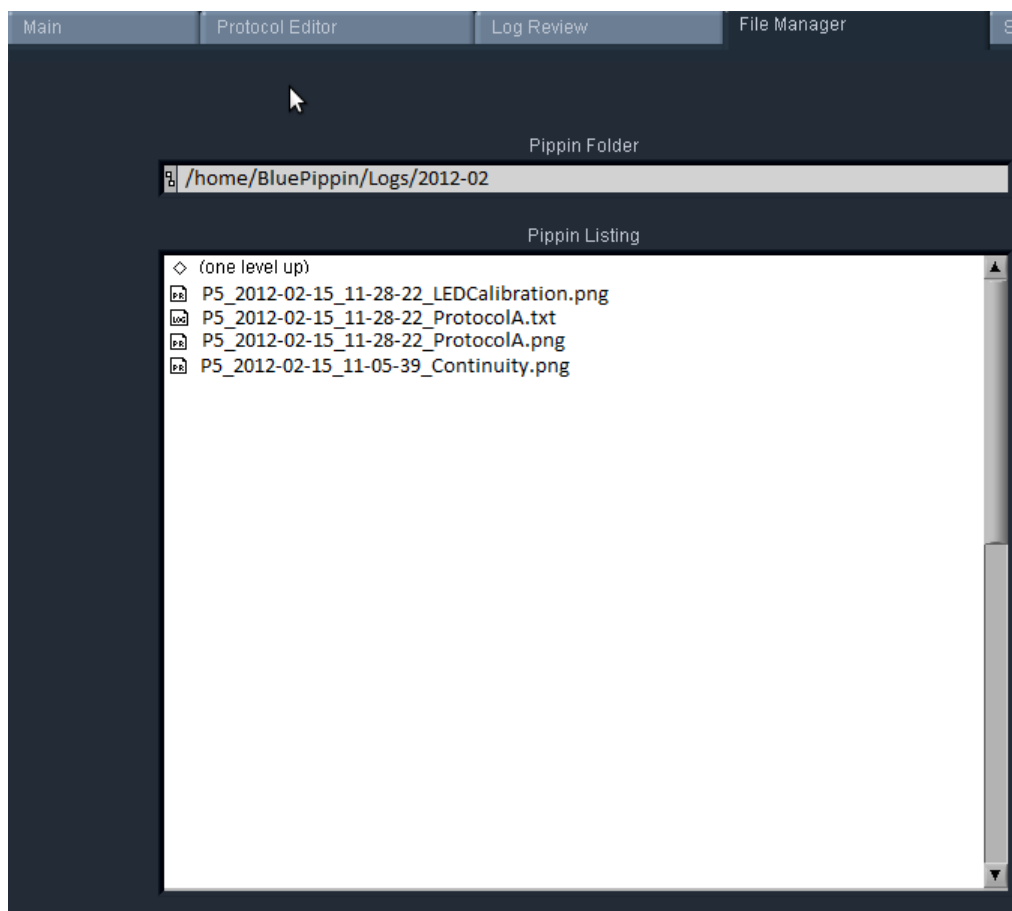
At the end of every run, the BluePippin will automatically save a log file (.txt) which can be viewed on the Log Review Tab (or the PC software version of Log Review). A screen image (.png) of the Main Tab is saved after the run has been finished. Screen images of all continuity tests and calibration tests are also automatically saved.

All files may be accessed from the File Manager Tab. The files are saved internally on the Pippin hard drive in the directory named **/home/pippin/BluePippin/Logs/** in a folder with a year-month (YYYY-MM) folder name.

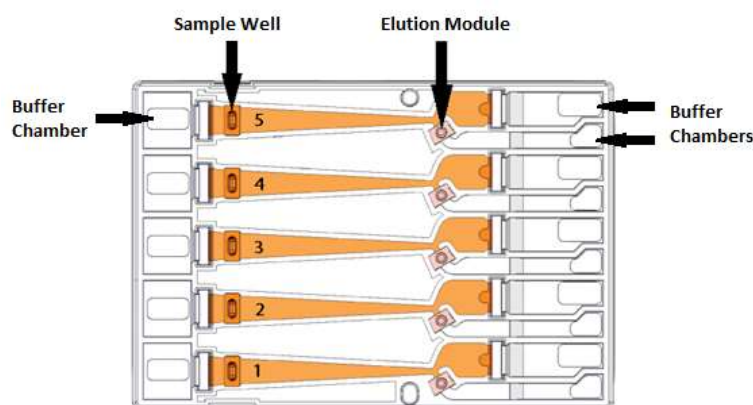
Log files names have the following convention:

[Instrument serial number/name] \_[year]-[month]-[day]\_[hour]-[minute]-[second]\_[user input protocol name or test type].[file extension]

An example of the four types of log files, and file structure in the File Manager Tab, is shown below. The files will be saved every time the these procedures are undertaken.



# 13 Sample Collection



## 13.1 Overview

1. Remove the sealing tape strip that covers the elution wells.
  2. Samples can be removed from elution modules using a standard 100-200µl pipette.
- Important!** *Make sure that the pipette tips used for collection extend all the way to the bottom of the elution modules without sealing the elution port opening. If the tips seal the port opening, it will be extremely difficult, if not impossible, to completely recover the contents of the elution module. Test tip fit using the empty rinse cassette supplied with the instrument.*
3. Samples from standard cassettes with sealed elution modules will be recovered in approximately 40µl of electrophoresis buffer.
  4. When all samples are collected, remove used cassette from instrument and dispose of it properly.



**Important!** *Used cassettes should never be allowed to sit in closed instruments for long periods of time (e.g., more than one day, overnight is acceptable). Under those conditions, humidity from the cassette reservoirs can accelerate corrosion of the electrode assembly, located in the sliding cover.*



**Important!** *Qubit fluorometry is recommended for determining DNA concentrations of eluted samples. UV absorbance-based methods (eg. Nanodrop) give inaccurate results on post-Pippin products: an artifact from the cassette manufacturing process interferes with accurate quantification.*



**Note.** *Electrophoresis buffer is 50 mM Tris, 30 mM TAPS, 0.1 mM EDTA. During elution, EDTA does not rapidly equilibrate across the ultrafiltration membrane of the elution module, and so the final concentration of EDTA in eluted samples is elevated to 1-2 mM*



**Note:** *Eluted samples can be used directly for ligation and amplification without buffer exchange.*

# 14 Sample Recovery and Yield

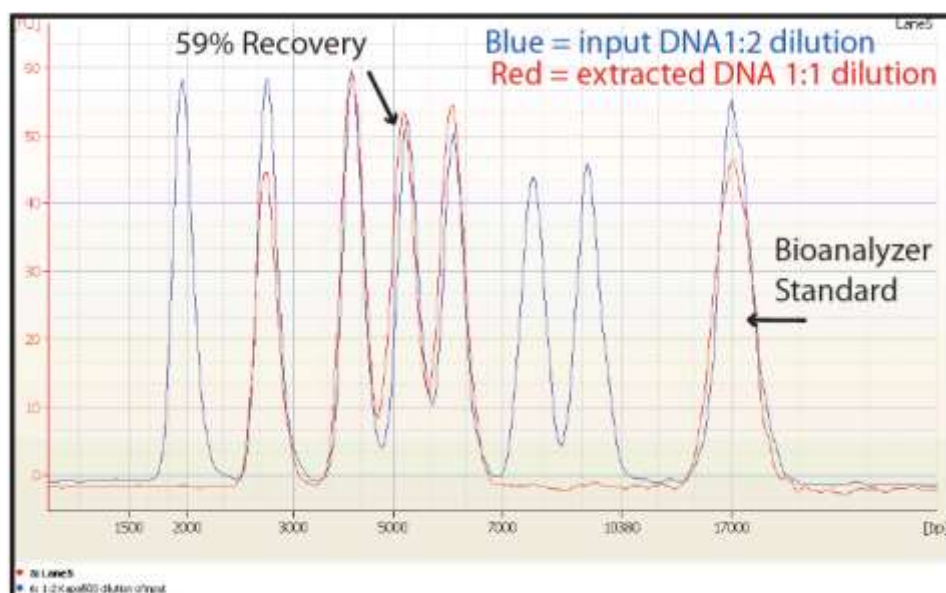
## 14.1 Overview

For most DNA collections, the intrinsic sample recovery, based on the input and recovery of restriction fragments, is between 50-80% (section 14.2). The amount of DNA recovered from a sheared/fragmented sample is dependent on the input DNA distribution profile, where the size selection occurred relative to that profile, and the range of fragments collected (section 14.3).

DNA may become entangled in the ultra-filtration membranes in the elution modules which can reduce yield. The BluePippin automatically adds a brief field reversal at the end of each elution to “push” DNA off of the membrane (Section 14.4). However for higher molecular weight DNA collections (>2kb), we recommend several user steps to help improve sample recovery (section 14.5).

## 14.2 Intrinsic Sample Recovery on the BluePippin

Intrinsic DNA recovery in BluePippin cassettes is determined by running known amounts of a plasmid restriction digest on the BluePippin, collecting a broad range of fragments from the digest, and comparing the input and product profile quantitatively using the Agilent Bioanalyzer 2100. The intrinsic recovery of DNA fragments for most Pippin cassette types is between 50-80%. **Figure 14.1** shows the recovery of a 5kb band from a 0.75% cassette.

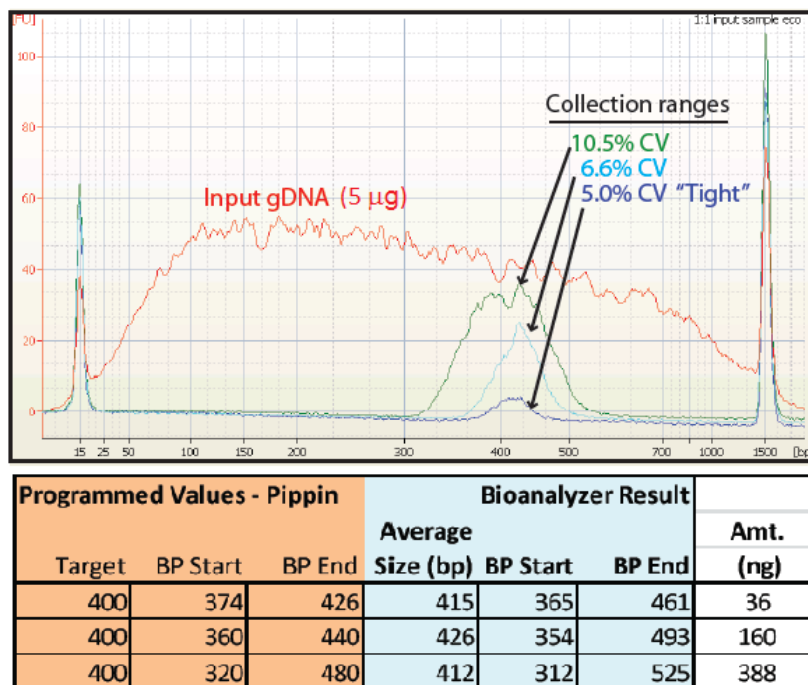


**Figure 14.1.** An example of the intrinsic recovery of 5 kb band on a 0.75% agarose cassette.

### 14.3 Improving Product Yield by Selecting a Wider Size Range

The BluePippin can produce very narrow size distributions from sheared genomic DNA. However, narrower size distributions will necessarily mean that a smaller fraction of the input DNA will be recovered. Users should broaden their collection ranges if the default tight settings do not produce enough DNA for their application.

**Figure 14.2** shows an example of the effect of size range selection vs. yield.



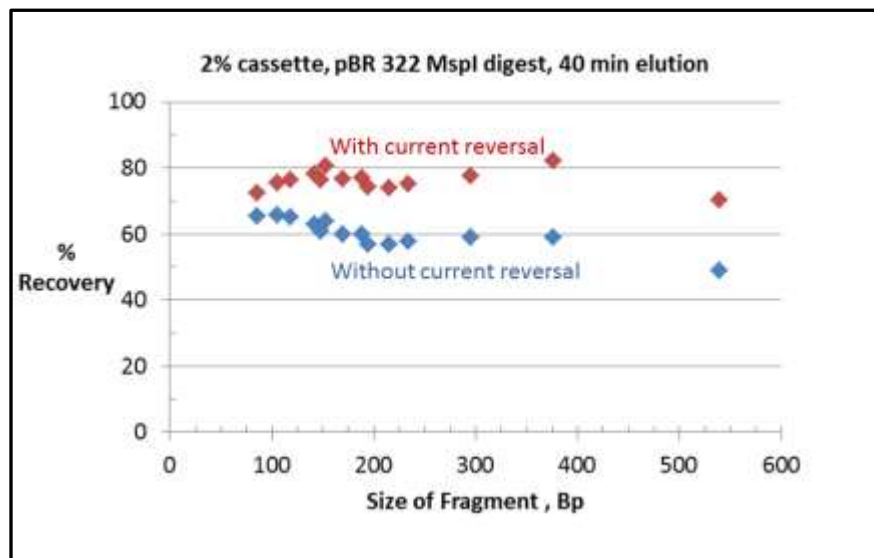
**Figure 14.2.** Increasing yield by widening the size selection range.



**Note.** The percent recovery specification is determined by collecting known amounts of restriction fragments (Section 14.2). Product yield from a sheared DNA sample is influenced by the fragment distribution and input profile of the sample.

## 14.4 Improving Product Recovery with the Field Reversal

The BluePippin provides a brief current reversal at the end of a sample elution can improve sample recovery by up to 20%. The field reversal is a default setting, located in the System Options Tab of the Pippin Software. The use of this option is recommended, but may be turned off by users. **Figure 14.3**, below, shows the improvement that can be achieved. **Figure 14.4** shows the setting option in software. When activated, the setting will be applied to all subsequent runs until the user again changes the settings in the System Options Tab.



**Figure 14.3.** Improving recovery with a 5 sec.current reversal. A 40 minute elution of a plasmid restriction digest was run, and each data point represents an individual band.



Use this button to turn field reversal OFF/ON, and then press ("Accept"). The default setting is "ON".

**Figure 14.4.** System Options Tab with expanded view of Reverse Field Option.

## 14.5 HMW DNA: Recommendations to Improve Yield

Sage Science recommends the following procedures, in order of effectiveness, to maximize the yield for high molecular weight DNA (>2kb, and “high-pass” protocols).

1. Wait **at least 45 min** after termination of the run before removing eluted DNA (it is OK to leave samples in instrument for hours, i.e. for an overnight run).
2. Additional 10-30% yield can often be achieved by rinsing the elution well with Tween 20 (0.1% Tween 20 in 0.5X electrophoresis buffer). Tween solution is provided by Sage Science with cassette kits for HMW collections.

After removing the initial eluted volume:

- Remove eluted sample from elution well
- Add 40µl Tween solution (supplied with the cassettes) to the elution well
- Wait 1 minute
- Remove solution and pool with the original extracted sample, or process separately



**Important!** *Qubit fluorometry is recommended for determining DNA concentrations of eluted samples. UV absorbance-based methods (eg. Nanodrop) give inaccurate results on post-Pippin products: an artifact from the cassette manufacturing process interferes with accurate quantification.*

## 15 System Validation

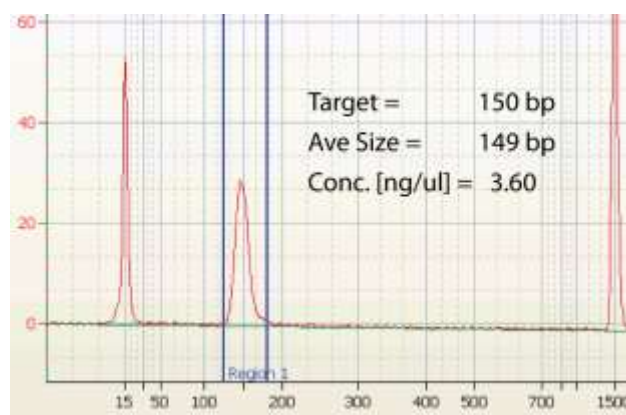
Control DNA can be purchased from Sage Science to check the performance of the BluePippin system. The Control DNA is useful to test, refine, and troubleshoot BluePippin size fractionation protocols. For comparison to factory tested cassettes, an extraction protocol and typical Agilent Bioanalyzer results are provided with the kits.

**Figure 15.1** illustrates QC size selection protocol for the 2% agarose control kit, and **Figure 15.2** shows a typical result from a 150 bp tight extraction from the kit guide.

BluePippin cassettes and instruments are functionally tested using restriction digests of genomic DNA from *E. coli*. For each cassette type, a different restriction digest is used, chosen so that size distribution of the digested DNA closely matches the useful fractionation range of the cassette, without any significant peaks or discontinuities. Following restriction digestion, the control DNA is purified by phenol:chloroform extraction, dialyzed, and diluted into BluePippin electrophoresis. Each kit contains sufficient control DNA to fully load four gel cassettes.

	Tight	Range	Time	Peak	Ref	Off	BP Target	BP Start	BP End	BP Pause
5							500	460	540	0
4							400	368	432	0
3							275	253	297	0
2							150	138	162	0
1							0	0	0	0

**Figure 15.1** Control DNA profile (with reference marker) and DNA extraction protocol for a 2% agarose DNA control kit run.



**Figure 15.2** Example of a Bioanalyzer result for the 150 bp target of a Control DNA run on a 2% Agarose Gel Cassette



**Important!** Data are not intended to imply guaranteed results or performance. Control standards are intended to demonstrate that the BluePippin system is functioning as expected, and that proper operational technique is being used.

## 16 System Options Tab

The default screen on the BluePippin is a tabbed format. The System Options is the fifth tab.

### Overview

The System Options Tab allows users to set or change global configurations for the software and BluePippin.



This screen allows users to set the following:

- **Instrument name:** A name can be given to (or changed for) the instrument that will be displayed in the Main Tab and in the log files. The default name is the instrument serial number
- **UDP Server Port:** Provides an address for remote communications between the BluePippin and wireless control. Contact Sage Science for support.
- **Reversible Field for Sample Recovery:** When activated, all sample collections will terminate with a 5 second field reversal to improve recovery. When deactivated, all sample collections will not include the field reversal. The default setting is ON. When activated, the current will be reversed on all subsequent runs until the user changes the setting through the System Options tab.
- **Date/Time:** This allows users to set or change the date and time settings for the instrument. The date and time settings are recorded in log files and log file names.



To Change the settings, press the “System Options” Tab.

### Instrument name

1. Enter a text into the “Instrument Name” field.
2. The “Settings Changed” indicator light will activate. Press “Accept” to accept the new setting.

### Reverse field option

1. To turn on: press the “Use Reverse Field for Sample Recovery” button. The indicator display will change from dark gray to white, and the display will change from “OFF” to “ON”.
2. The “Settings Changed” indicator light will activate. Press “Accept” to accept the new setting.



**Important!** *The “reverse field” setting will apply to all runs until it is changed in this tab.*

### Date and time

1. Edit the date or time display directly in the “Time/Display” field, or select the calendar icon next to the field and edit the time or select a date.
2. The “Settings Changed” indicator light will activate. Press “Accept” to accept the new setting.

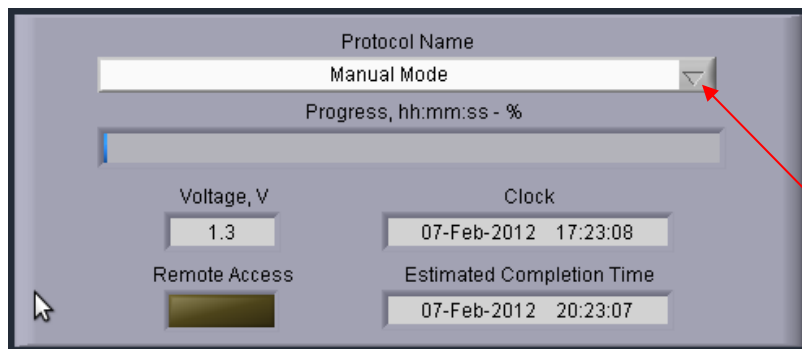
The screenshot shows a dark-themed interface for the 'System Options' menu. It contains the following elements:

- Instrument Name:** A text input field containing 'Blue #2'.
- UDP Server Port:** A text input field containing '50000'.
- Use Reverse Field for Sample Recovery:** A toggle switch currently set to 'ON'.
- Date / Time:** A text input field containing '25-Feb-2012 02:04:59' with a small calendar icon to its right.
- Footer:** A message 'A change in settings will not be accepted if an experiment is underway' is displayed above three buttons: 'REVERT', 'Settings Changed' (which has a small green indicator light next to it), and 'ACCEPT'.

## 17 Running in Manual Mode

The BluePippin may be run without using a programmed protocol and with manual control.

1. Select the **Manual Mode** from the top of the “Protocol Name” drop down menu in the Run File Manager.



2. Press “Start” on the controller.
3. Sample lanes may be run individually by pressing the “Separate” button, and elutions are carried out by pressing the “Elute” button. After elution, press the “Separate” button, to end the elution (and return to separate mode), or press the “Idle” button to stop the run on that lane.



4. The “Pause” / “Resume” and “Stop” buttons are also operative as in automated runs.



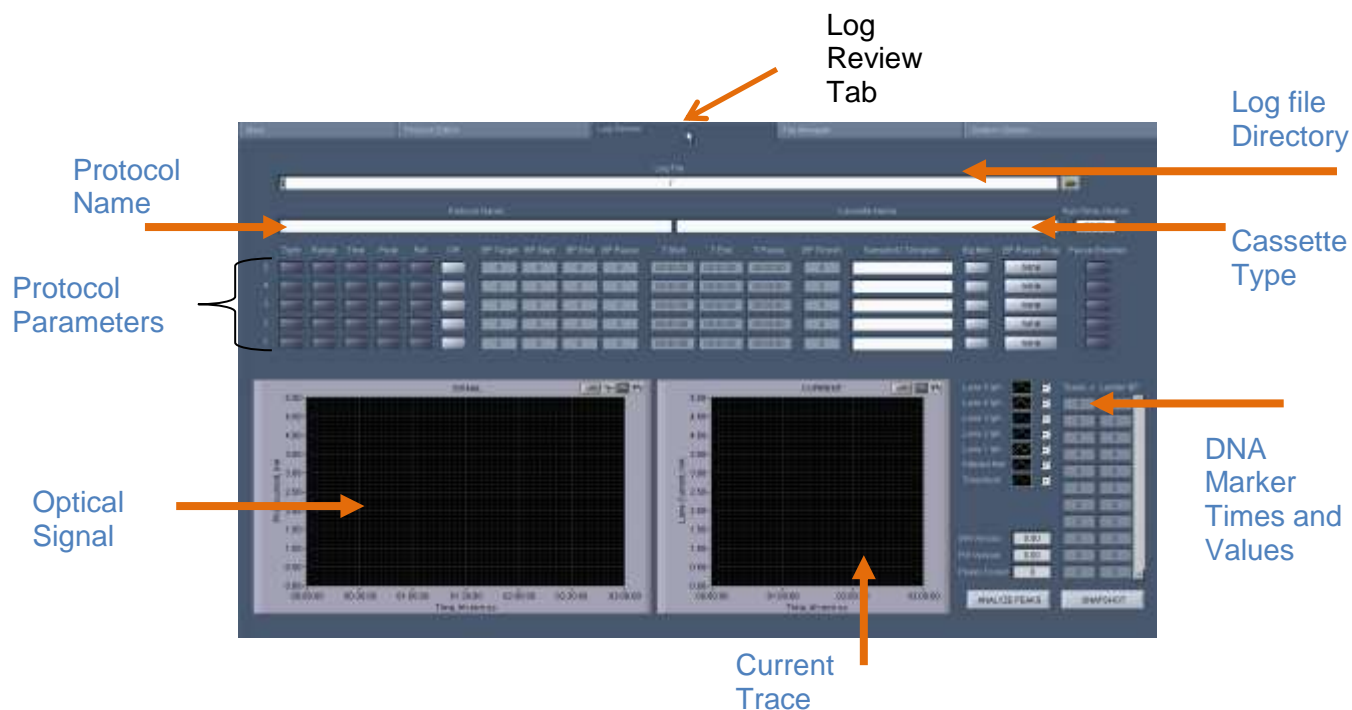
**Note:** *There is a delay between the time that a fragment is detected (and visible on the graph or image) and when it is in position to be eluted. See cassette specifications at the end of this manual to determine the best timing for manual runs.*

## 18 Analyzing Runs - Log Review Tab

The default screen on the BluePippin is a tabbed format. The Log Review is the third tab.

### Overview

The Log review screen is used to review data and programming parameters from previous size selection runs. All programming parameters are displayed as originally entered in the Protocol Editor. Optical and electrical current data from the run are displayed in graphical windows. Specific regions of either window can be selected and expanded as needed for detailed analyses. These data are useful for refining size selection performance and verifying instrument performance.



## Opening a Log file in the Review Screen

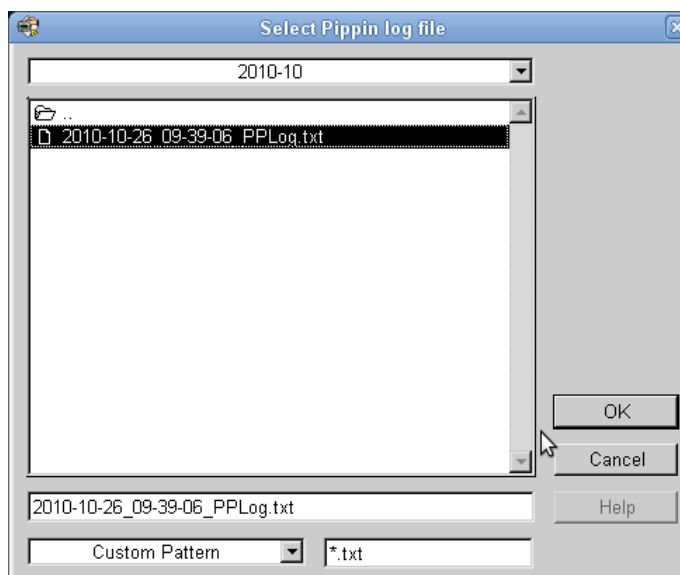


**Note:** A stand-alone Review Log Program is available for PCs. Contact sage science support.

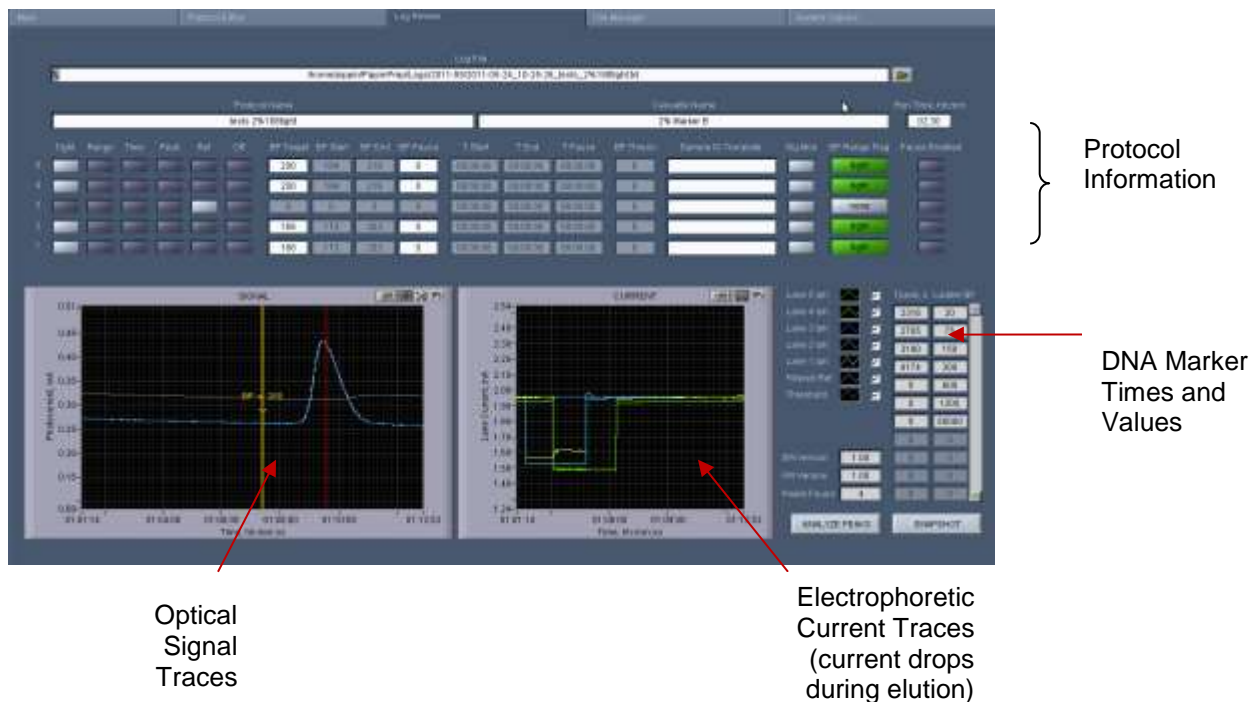
- i. Click the “Log Review” tab along top of the screen.
- ii. To select a log file, press the folder icon in next to the “Log File” field.



3. Select a log (.txt) file.

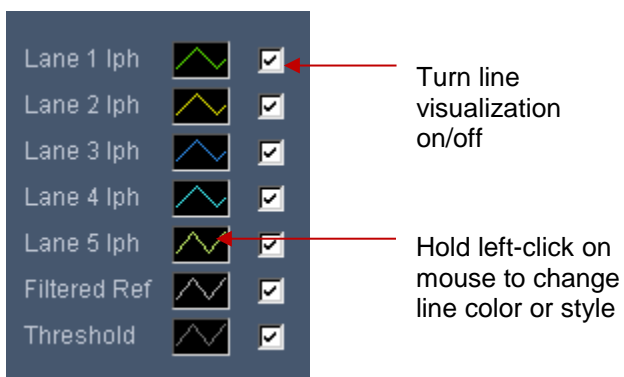


4. This will populate the Review Log Screen with data from the selected run log:



## Visualizing Pippin Run Data

The current and optical signal traces are color-coded and a key is displayed to the right of the “Current” graph. A check mark next to each lane will toggle the visualization of that lane on and off. The type and color of the lines may also be adjusted by clicking inside the line field and holding the left-click on the mouse. The same styles are applied to both the signal and current traces.

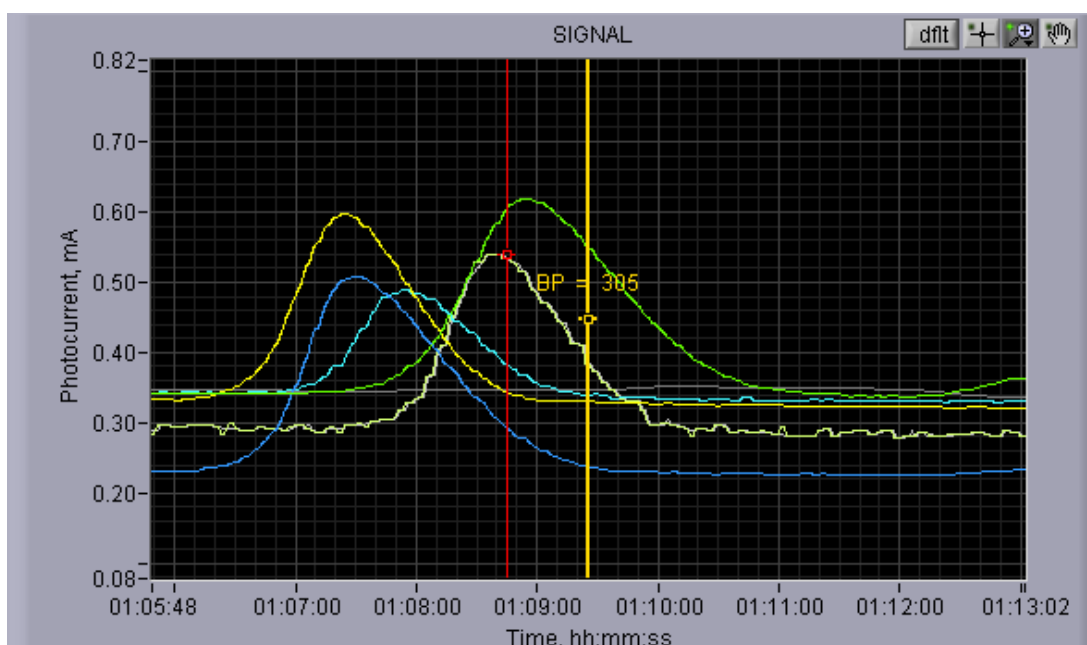


## Signal Graph

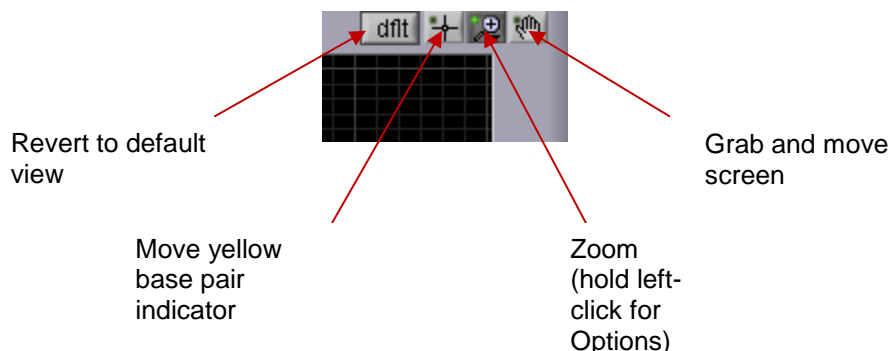
The “Signal” graph allows users to closely inspect the elution results of a Pippin run from a run log. The colored horizontal traces display the actual optical signal results in mA.

The vertical red lines indicate called reference DNA marker peaks that are listed in the DNA marker times and values list.

The yellow vertical line indicates the estimated base pair position at a given run time. The indicator may be moved (see below) along the x-axis showing the relative base pair position. If the perspective of the graph is changed (see below), the indicator will automatically default to the center of the x-axis.



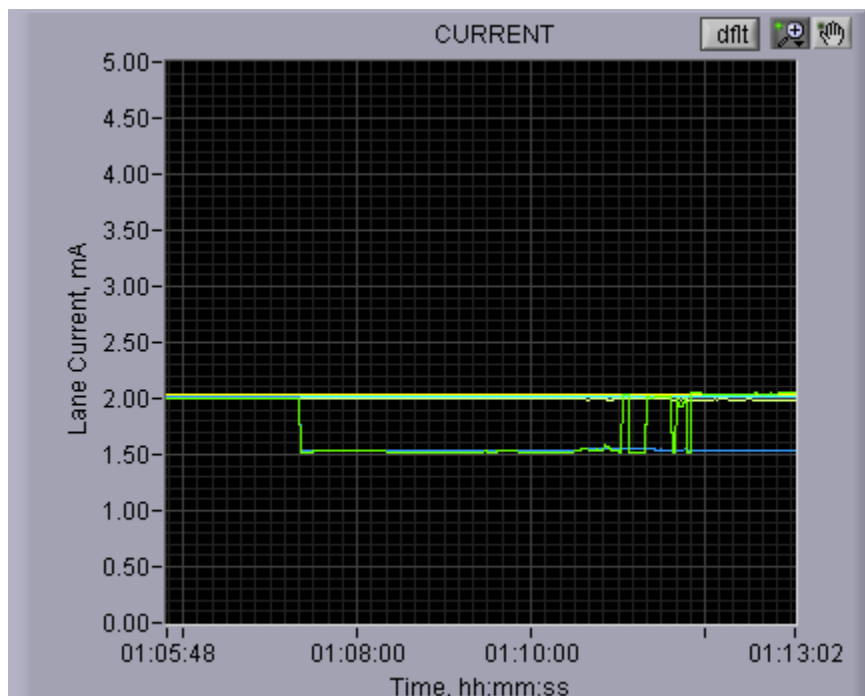
There are four icons in the upper right hand corner of the graph. The functions are listed below.



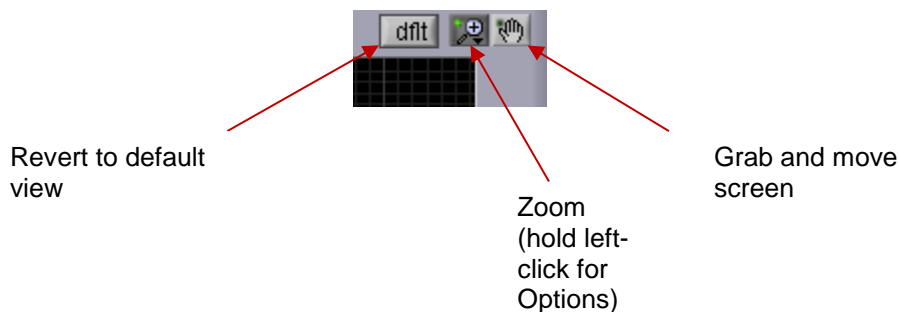
## Current Graph

The “Current” graph allows users to closely inspect the electrophoretic current profile of a Pippin run from a run log. The colored horizontal traces display the actual current signal results in mA.

The timing of an elution (switch from separation to elution) is accompanied by a 0.5 mA drop in current.



There are three icons in the upper right hand corner of the graph. The functions are listed below.



## Saving a Review Image

An image from the review screen may be captured and automatically saved by pressing the “Snapshot” button. The .png file will date and time stamped and saved in the Pippin log file directory.





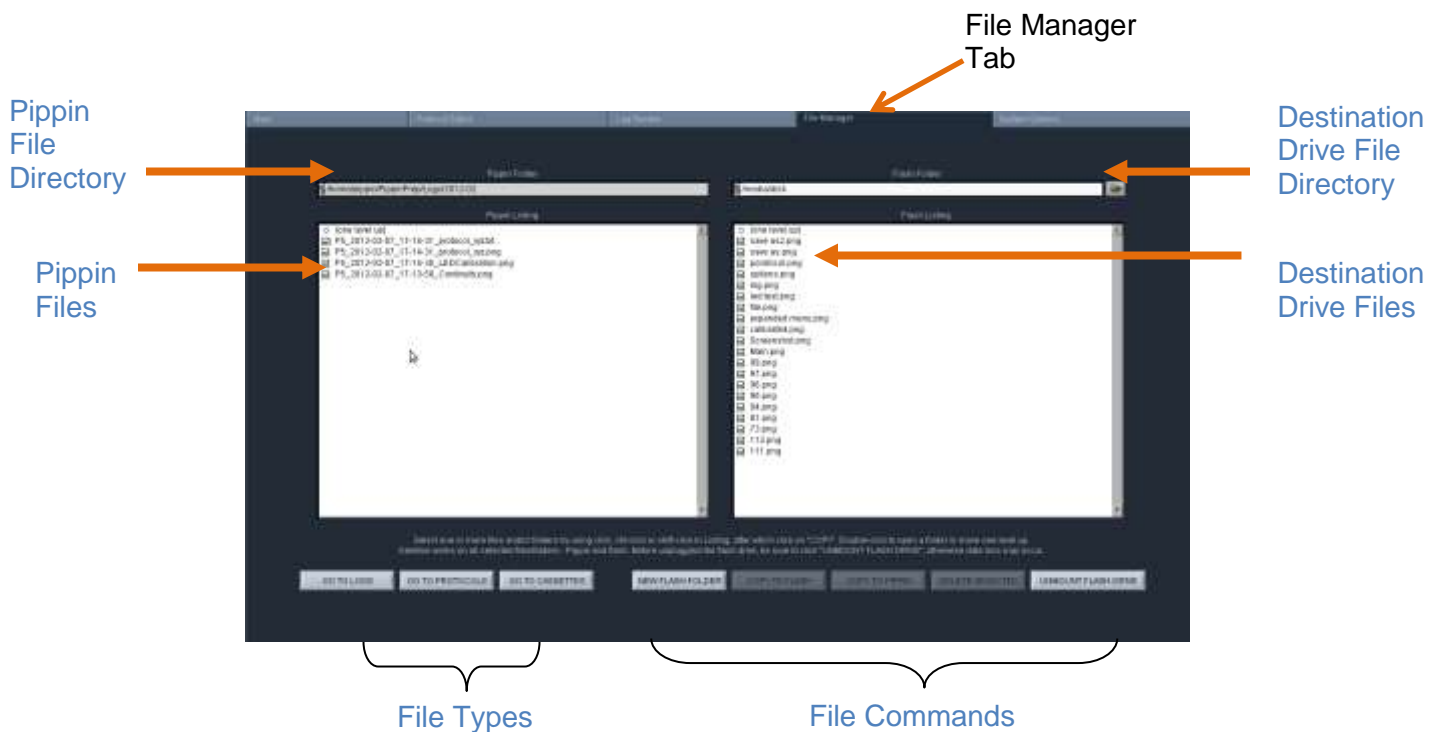
# 19 Managing Files -- File Manager Tab

The default screen on the BluePippin is a tabbed format. The File Manager Tab is the fourth tab.

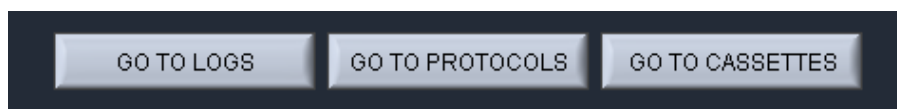
## 19.1 Overview

The File Manager Tab allows users to access, copy, and delete BluePippin files. There are three types of files used by the system; log (text and image), protocol and cassette type.

The screen is divided into two sub-screens; the Pippin file directory on the left, and a target directory (portable “flash” media, i.e. USB key) on the right.



## 19.2 File Types



There are three types of files that are stored in different directories.

The file types are:

### Log Files:

- **Optical Calibration** -- at the end of every optical calibration routine, a screenshot of the result is saved as a .png file.
- **Continuity Test** – at the end of every continuity test, a screenshot of the result is saved as a .png file.
- **Main Screen** – at the end of every run, or if a run is stopped, a screenshot of the main screen is saved as a .png file.
- **Run Log** – at the end of every run, or if a run is stopped, a text (.txt) file is saved. This file contains optical data, electrical current data, and protocol and sample information from a run. Run Log data may be viewed in the Log Review screen (See Section 12).

### Protocol Files:

Size selection protocols that have been created, named, and saved by BluePippin users. These have a .ppprot file extension, and are only recognized by the BluePippin.

### Cassette Files:

Cassette definition files. These are created by Sage Science and not editable by BluePippin users. These have a .ppcass file extension, and are added to the BluePippin during manufacture or through software upgrades.



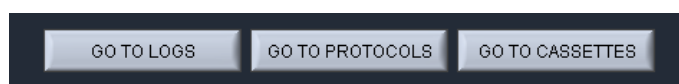
**Note.** The BluePippin is equipped with 25 GB of storage. The combined files sizes for the log files saved for each run is about 150 kb, or a total storage capacity for 166,000 runs.

## 19.3 Transferring files

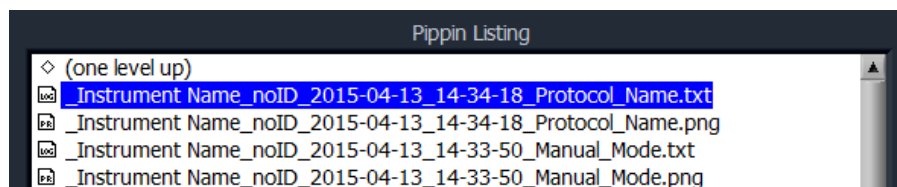
Files may be copied between the BluePippin and a USB flash drive. To transfer a file, place a USB drive into the USB port on the front panel of the instrument (the USB ports on the back panel may be used as well).

### To transfer from the BluePippin to a USB Drive:

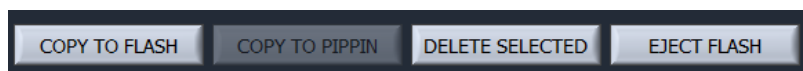
1. Select the directory from which the file will be copied.



2. Highlight the file to be copied from the BluePippin.



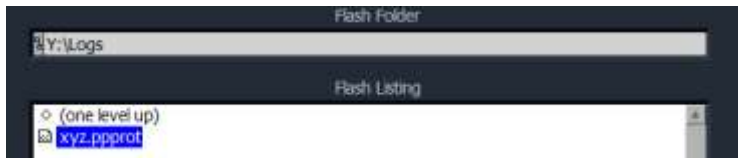
3. Press the "COPY TO FLASH" button.



4. Press the "EJECT FLASH" button.
5. Remove the USB drive from the USB port.

***To transfer from a USB Drive to the BluePippin:***

1. *Highlight the file to be copied.*



2. *Select the directory from which the file will be copied.*



3. *Press the "COPY TO PIPPIN" button.*



4. *Press the "EJECT FLASH" button.*

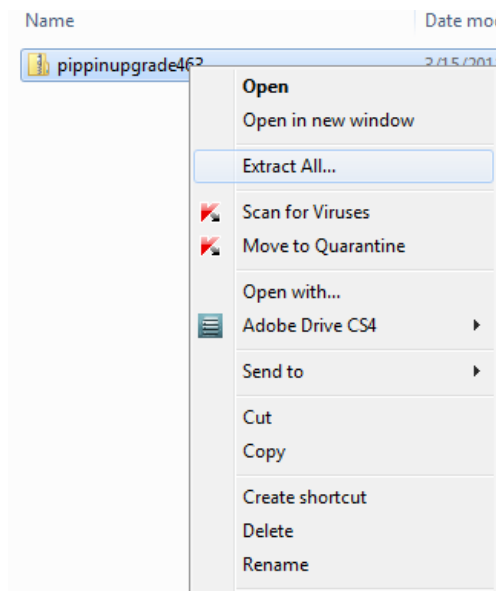
5. *Remove the USB drive from the USB port.*

## 20 Upgrading Software

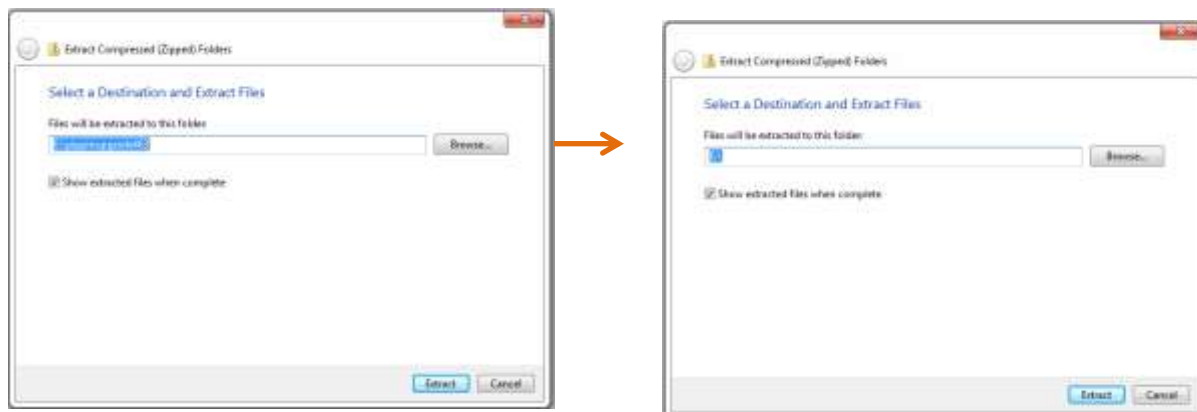
Pippin upgrade software is available for download at [www.sagescience.com/support/](http://www.sagescience.com/support/). The files are provided in a zip file, and the contents must be extracted to the root directory of a USB flash drive.

### 20.1 Extracting the Files to a USB flash drive

1. Download the Software Upgrade package by pressing the appropriate link on [www.sagescience.com/support/](http://www.sagescience.com/support/) (in the Downloads section, under “Software”).
2. Press “Save File” when prompted. The zip file will likely save to a “Downloads” folder on your computer. The file will be named pippinupgrade[version number].zip.
3. Copy the zip file to a USB drive. Make sure the file is transferred to the root directory and not placed within a folder.
4. Right-click on the zip file, and select “Extract All...”:



5. A window which will launch to prompt you to select a destination where to extract files. The prompt will suggest creating folder based on the zip file name. Delete the destination folder name, so that only the root directory appears (E:\ in the example below).



**Correct:**

Files will be extracted to this folder:

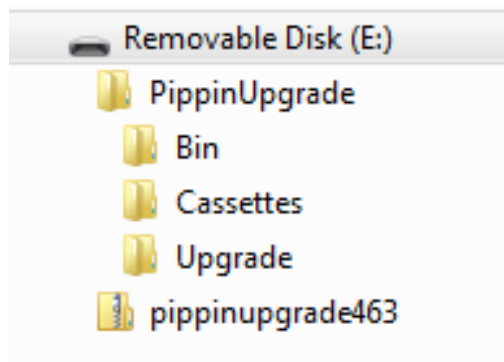
E:\

**Not Correct:**

Files will be extracted to this folder:

E:\pippinupgrade463

6. The final USB file structure should be as shown. The zip file may be deleted.



## 20.2 Upgrading the Pippin Instrument Software

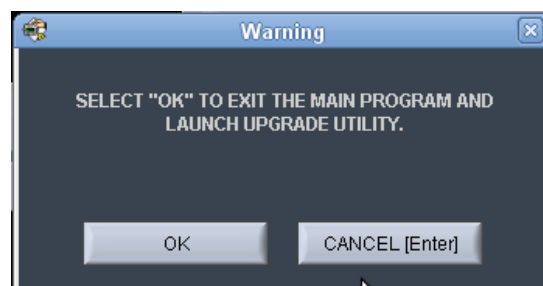
1. Insert the USB drive with the upgrade folder into the USB port on the front panel of Pippin instrument.
2. From the Main Tab, press “INFO”. This will launch the information window.



3. From the Information Window, press “SOFTWARE UPGRADE”



4. Press “OK” at the warning prompt, the Software Upgrade Window will launch.





5. Press “INSTALL UPGRADE”, this will take about 5 seconds

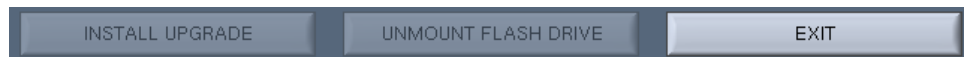


6. Press “UNMOUNT FLASH DRIVE”

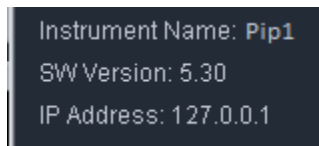


**Warning!** Be sure to “Unmount Flash Drive” prior to removal. Failure to do so may cause data loss and problems with the upgrade procedure.

7. Press “EXIT” to return to Main Menu. This will install the software. Installation may take up to 30 seconds.



8. To check that the software instrument has been update, Press “INFO” again. In the Information window, the software version number is listed on the left side.



**Note:** The system should be ready to use; re-boot is not necessary.



## 21 ***Preventative Maintenance – Rinsing Electrodes***

*It is possible that salts will accumulate on the electrodes that are housed in the BluePippin lid assembly. This may alter the performance of the instrument over time. An empty cassette body, labelled “Rinse Cassette” is provided with the BluePippin. This should be used with the procedure below. No other preventative maintenance is required.*



**Important!** Electrodes should be rinsed **after 5 runs or once per week**, whichever is more frequent.

### **21.1 Electrode Rinse Procedure**

1. Fill the rinse cassette with deionized water.
2. Load the rinse cassette onto the sample tray and close the BluePippin lid.
3. Allow the electrodes to rinse for several seconds.
4. Open the lid and remove the cassette.



**Note:** If a rinse cassette is lost or damaged contact Sage Science support for a replacement.

## 22 Warranty and Service

### Warranty

Sage Science will offer a no charge repair or replacement of defective product if notified within the warranty period and product has not been misused, altered or damaged by disaster. This warranty is not transferable from the original purchaser to a subsequent purchaser.

**Instruments** – The BluePippin instrument and monitor have a standard 2-year parts and labor warranty. Instruments are subject to depot repair or replacement. On-site maintenance or repair is not implied. Do not attempt to repair or disassemble the BluePippin instrument. This will void the remaining warranty and possibly create a dangerous condition. Sage Science support staff may ask for a log file or image file to evaluate or troubleshoot instrument issues.



**High Voltage!** *The BluePippin contains high voltage apparatus. The instrument should be repaired by authorized personnel only. Do not disassemble under any circumstance.*

**Cassettes** – Cassettes have a 1-year warranty. If a cassette or sample lane is defective Sage Science will replace the cassette at no cost. The defective cassette should be disposed of as per regulations at the user's facility. Sage Science support staff may ask for a log file or image file to evaluate or troubleshoot cassette issues.

### Cassette Disposal

Reagents and buffer should be disposed of according to internal lab safety policy. Cassettes should be disposed of as laboratory waste.



**Note:** Dye-free cassettes use fluorescein dye bound to the reference external markers and internal standards.

## 23 Ordering Information

Products			
Instrument			Catalogue No.
BluePippin (Includes monitor, keypad, mouse and accessories)			BLU0001
Dye-Free Gel Cassettes – with Internal Standards (10/pk) Size Selection Ranges (see section 25 for specifications)	Internal Standards	Catalogue No.	
3% agarose, dye-free, 100 – 250 bp	Q3	BDF3010	
2% agarose, dye-free, 100 – 600 bp	V1	BDF2010	
1.5% agarose, dye-free, 250 – 1500 bp	R2	BDF1510	
1.5% agarose, dye-free, High-Pass >250	R2	BDF1510	
Dye-Free Gel Cassettes – with External Marker (10/pk) Size Selection Ranges	External Marker	Catalogue No.	
2% agarose, dye-free, 100 – 600 bp	M1	BEF2010	
0.75% agarose, low range, > 2 – 10 kb	S1	BLF7510	
0.75% agarose, upper range, >10 – 18 kb*	U1	BUF7510	
0.75% agarose, High-Pass > 4 – 10 kb*	S1	BLF7510, PAC20KB	
0.75% agarose, High-Pass > 6 – 10 kb*	S1	BLF7510, PAC20KB	
0.75% agarose, High-Pass >15 – 20 kb*	S1	BLF7510, PAC20KB	
0.75% agarose, High-Pass >30 – 40 kb**	U1	BLF7510, PAC20KB	
0.75% agarose, mid range, 18 – 27 kb	T1	BMF7510	
0.75% agarose, high range, 50 kb	Z1	BHF7510	
High Pass Plus >15kb	U1	BPLUS10	

\* BLF7510 and PAC20KB (for PacBio users) consist of the same components, except for the user guide.

\*\* BUF7510 and PAC30KB (for PacBio users) consist of the same components, except for the user guide.

**Ordering Information Cont'd**

<b>Control DNA for Performance Validation</b>	<b>Catalogue No.</b>
Control DNA for 3% Gel Cassette, (Int. Std) 90 – 250 bp, (5 µg/load), 20 loads	<b>CIS3004</b>
Control DNA, 2% Gel Cassette, (Int. Std). 100 – 600 bp, (5 µg/load), 20 loads	<b>CIS2004</b>
Control DNA for 1.5% Gel Cassette, (Int. Std) 250 – 1500 bp, (2 µg/load), 20 loads	<b>CIS1504</b>
Control DNA for 2% Gel Cassette, (Ext. Mkr.) 100 – 600 bp, (5 µg/load), 16 loads	<b>CON2004</b>
Control DNA for 0.75% Gel Cassette, (Ext. Mkr.), 1 -- 10 kb, (5 µg/load), 16 loads	<b>CON7504</b>
Control DNA for 0.75% Gel Cassette, (Ext. Mkr.), 10 -- 27 kb, (5 µg/load), 16 loads	<b>CON7604</b>
Control DNA for 0.75% Gel Cassette, (Ext. Mkr.), High-Pass (5 µg/load), 16 loads	<b>CHP7510</b>
<b>Reagent Replacement Kits – Dye Free with Internal Standards</b>	<b>Catalogue No.</b>
BDF3010 reagent replacement kit for 10 cassettes, Marker Q3	<b>RBQ3010</b>
BDF2010 reagent replacement kit for 10 cassettes, Marker V1	<b>RBF2010</b>
BDF1510 reagent replacement kit for 10 cassettes, Marker R2	<b>RBF1510</b>
<b>Reagent Replacement Kits – Dye Free with External Marker</b>	<b>Catalogue No.</b>
BEF2010 reagent replacement kit for 10 cassettes, Marker M1	<b>RBE2010</b>
BLF7510 reagent replacement kit for 10 cassettes, Marker S1	<b>RBF7510</b>
BUF7510 reagent replacement kit for 10 cassettes, Marker U1	<b>RUK7510</b>
BMF7510 reagent replacement kit for 10 cassettes, Marker T1	<b>RMF7510</b>
BHF7510 reagent replacement kit for 10 cassettes, Marker Z1	<b>RHZ7510</b>

## 24 Instrument Specifications

### Specifications for BluePippin Instrument

Electrophoresis Voltage	25V, 100V, 150V constant, 100 V pulsed
Optical detection	470 nm excitation, 525 nm emission
Power Requirements	100-240 VAC +/-10% VAC, 2.5 A, 50-60 Hz
Weight	15 lbs / 7 kg
Dimensions	7H X 11W X 21D (in.) / 18H X 28W X 53D (cm)
Approvals	CE, CSA
Country of Origin	United States

## 25 Gel Cassettes Specifications

Specifications – gel cassettes	
Minimum Sample Load	15 ng
Maximum Sample Load <sup>1</sup>	2 µg sheared gDNA with 1.5% agarose 5 µg sheared gDNA all others
Accuracy <sup>2</sup>	specified on following pages
Reproducibility <sup>3</sup>	specified on following pages
Sample Recovery <sup>4</sup>	50-80%

1. Amounts DNA above the maximum may be loaded, however accuracy may be affected (DNA will migrate more slowly).
2. Deviation of actual target value from software input value divided by the actual value.
3. 2X standard deviation of replicate samples.
4. Recovery is measured using known amounts of plasmid marker ladder.



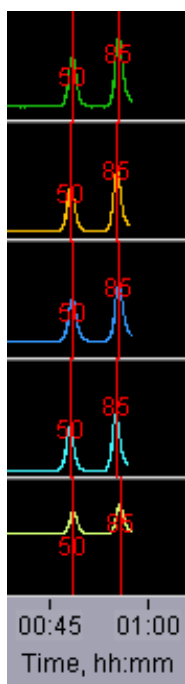
**Important!** DNA input samples should be purified to eliminate DNA binding proteins such as ligases, polymerases, restriction enzymes. Bound proteins can alter mobility and reduce recovery.

***Specifications subject to change without notice.***

## 25.1 3% Agarose, 100 bp-250 bp, Marker Q3 (internal standards)

Use Product Number: **BDQ3010**  
 Use Cassette Definition: **3% DF, Marker Q3**

### DNA Marker Q3 - Typical times to detector



**Estimated Collection Times for  
Minimum Size Range (Tight) Targets**

Target (bp)	Time to Time to Collect* (min)
100	65
140	70
180	80
240	90

\* Run times are affected by temperature and broad range collections.  
 Times should be used as an approximate guideline.

### Performance Specifications\*

100-250 bp

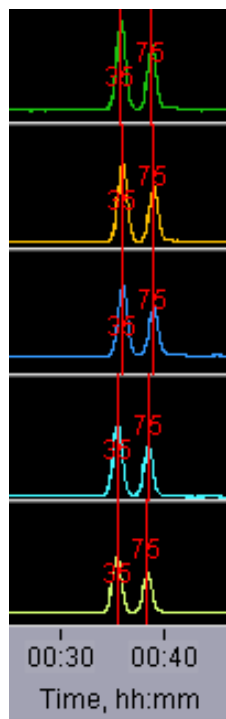
Minimum Size Distribution as CV	<8%
Sample Recovery	50 – 80%
Accuracy	<5%
Reproducibility	< 5%

**Specifications subject to change without notice**  
 \* see page 25-1 for specification definitions

## 25.2 2% Agarose, 100 bp-600 bp, Marker V1 (internal standards)

Use Product Number: **BDF2010**  
 Use Cassette Definition: **2% DF, Marker V1**

### **DNA Marker V1 - Typical times to detector**



**Estimated Collection Times for  
Minimum Size Range (Tight) Targets**

Target (bp)	Time to Time to Collect* (min)
100	49
200	57
300	63
400	71
500	79
600	86

\* Run times are affected by temperature and broad range collections.  
 Times should be used as an approximate guideline.

### **Performance Specifications\***

**100-600 bp**

<b>Minimum Size Distribution as CV</b>	<b>&lt;8%</b>
<b>Sample Recovery</b>	<b>50 – 80%</b>
<b>Accuracy</b>	<b>&lt;5%</b>
<b>Reproducibility</b>	<b>&lt; 5%</b>

**Specifications subject to change without notice**

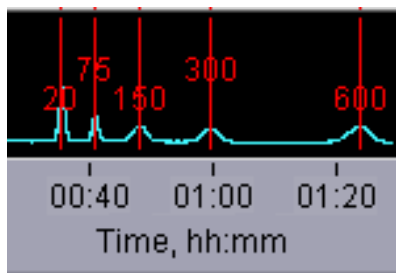
**\* see page 25-1 for specification definitions**



## 25.3 2% Agarose, 100 bp-600 bp, Marker M1 (external marker)

Use Product Number: **BEF2010**  
 Use Cassette Definition: **2% DF, Marker M1**

**DNA Marker M1 -**  
**Typical times to detector**



**Estimated Collection Times for**  
**Minimum Size Range (Tight) Targets**

Target (bp)	Time to Time to Collect* (min)
150	52
275	63
400	70
500	76
600	82

\* Run times are affected by temperature and broad range collections.  
 Times should be used as an approximate guideline.

### Performance Specifications\*

100-600 bp

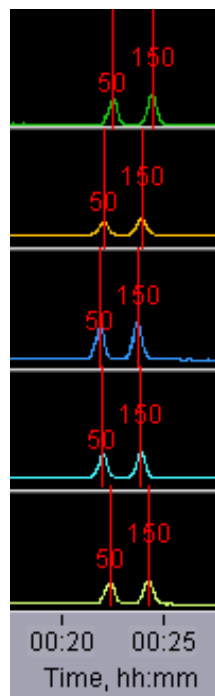
Minimum Size Distribution as CV	<8%
Sample Recovery	50 – 80%
Accuracy	<5%
Reproducibility	< 5%

**Specifications subject to change without notice**  
 \* see page 25-1 for specification definitions

## 25.4 1. 5% Agarose, 250 bp-1.5 kb, Marker R2 (internal standards)

Use Product Number: **BDF1510**  
 Use Cassette Definition: **1.5% DF, Marker R2**

**DNA Marker R1 -**  
**Typical times to detector**



**Estimated Collection Times for  
 Minimum Size Range (Tight) Targets**

Target (bp)	Time to Time to Collect* (min)
250	29
300	30
600	37
1200	49
1500	56

\* Run times are affected by temperature and broad range collections.  
 Times should be used as an approximate guideline.

### Performance Specifications\*

250-600 bp

800-1000 bp

1200-1500 bp

Minimum Size Distribution as CV	<8%	<8%	<15%
Sample Recovery	50 – 80%	50 – 80%	50 – 80%
Accuracy	<5%	<7%	<10%
Reproducibility	< 5%	< 8%	< 15%

**Specifications subject to change without notice**

\* see page 25-1 for specification definitions

## 25.5 1. 5% Agarose, High-Pass, Marker R2 (internal standards)

Use Product Number:

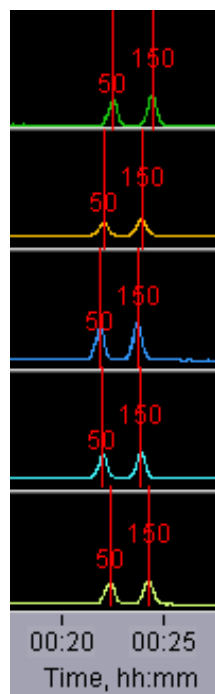
**BDF1510**

Use Cassette Definition:

**1.5% DF, Marker R2, 250-1500bp high-pass**

**DNA Marker R1 -**

**Typical times to detector**



### *Estimated Collection Times*

Approximately 2 hours for all “BPStart” settings.

Collects fragments up to 8kb

Threshold settings may be programmed between 250bp-1.5kb

### *Performance Specifications\**

<b>Accuracy, “BPStart”</b>	<b>&lt;10%</b>
<b>Reproducibility, “BPStart”</b>	<b>&lt; 10%</b>

**Specifications subject to change without notice**

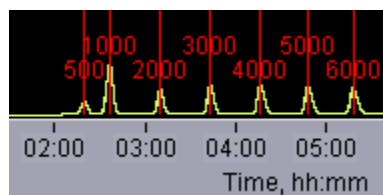
**\* see page 25-1 for specification definitions**

## 25.6 0.75% Agarose, 1-6 kb, Marker S1, Low Voltage (external marker)

Use Product Number: **BLF7510**

Use Cassette Definition: 0.75% Agarose Dye Free / **0.75% DF Low Voltage 1 - 6kb Marker S1**

### *DNA Marker S1 - Typical times to detector*



### *Estimated Collection Times for Minimum Size Range (Tight) Targets*

Target (bp)	Time to Collect* (hr:min)
1,000	3:04
2,000	3:45
3,000	4:22
4,000	5:10
5,000	5:46
6,000	6:25

\* Run times are affected by temperature and broad range collections. Times should be used as an approximate guideline.

### *Performance Specifications*

<b>Minimum Size Distribution as CV</b>	<b>10%</b>
<b>Sample Recovery</b>	<b>50 – 80%</b>
<b>Reproducibility</b>	<b>&lt;10%</b>

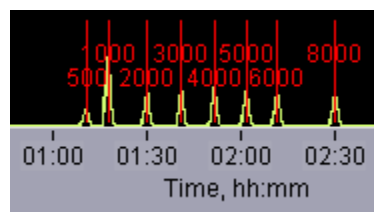
**Specifications subject to change without notice**  
**\* see page 25-1 for specification definitions**

## 25.7 0.75% Agarose, 2-6 kb, Marker S1, Pulsed-Field (external marker)

Use Product Number: **BLF7510**

Use Cassette Definition: 0.75% Agarose Dye Free / **0.75% DF 2 - 6kb Marker S1**

### *DNA Marker S1 - Typical times to detector*



### *Estimated Collection Times for Minimum Size Range (Tight) Targets*

Target (bp)	Time to Collect* (hr:min)
2,000	1:51
3,000	2:01
4,000	2:09
5,000	2:20
6,000	2:29

\* Run times are affected by temperature and broad range collections.  
Times should be used as an approximate guideline.

### *Performance Specifications*

<b>Minimum Size Distribution as CV</b>	<b>20%</b>
<b>Accuracy</b>	<b>&lt;10%</b>
<b>Reproducibility</b>	<b>&lt;10%</b>

**Specifications subject to change without notice**

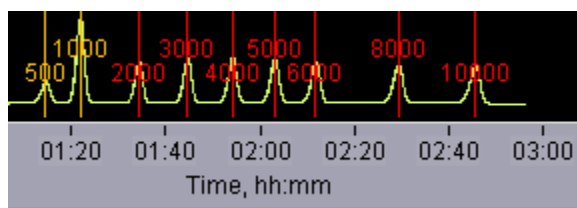
**\* see page 25-1 for specification definitions**

## 25.8 0.75% Agarose, 3-10 kb, Marker S1, Pulsed-Field (external marker)

Use Product Number: **BLF7510**

Use Cassette Definition: 0.75% Agarose Dye Free / **0.75% DF 3 - 10kb Marker S1**

### DNA Marker S1 - Typical times to detector



### Estimated Collection Times for Minimum Size Range (Tight) Targets

Target (bp)	Time to Time to Collect* (hr:min)
5,000	2:23
6,000	2:32
8,000	2:51
10,000	3:10

\* Run times are affected by temperature and broad range collections. Times should be used as an approximate guideline.

### Performance Specifications

Minimum Size Distribution as CV	20%
Accuracy	<10%
Reproducibility	<10%

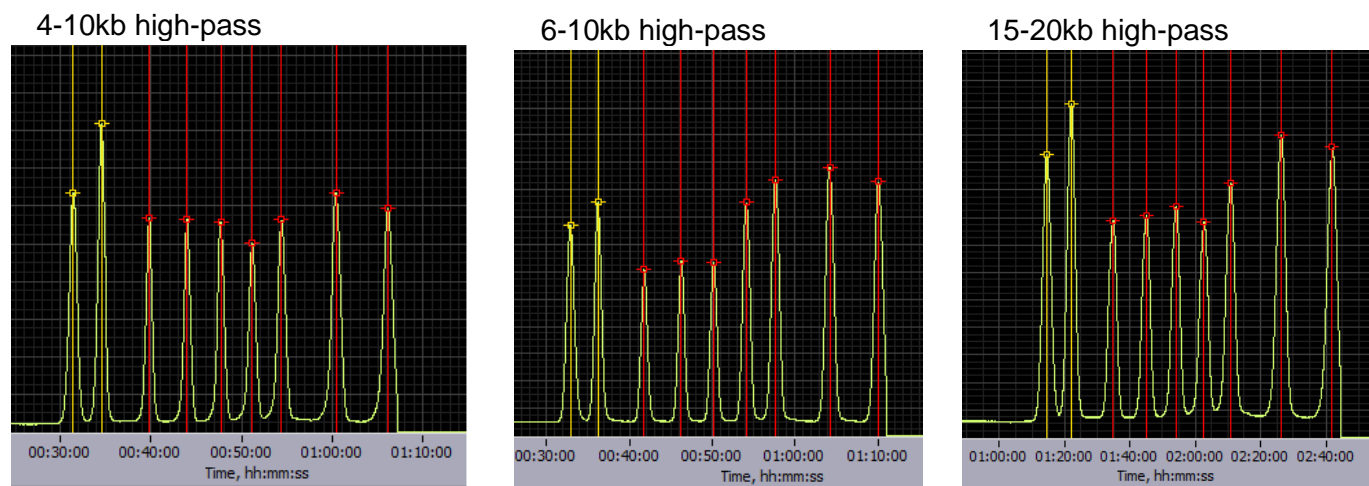
**Specifications subject to change without notice**

**\* see page 25-1 for specification definitions**

## 25.9 0.75% Agarose, High-Pass Protocols (4-20kb thresholds)

Use Product Number: **PAC20KB or BLF7510**  
 Use Cassette Definition: **Version 2: 0.75% DF Marker S1 high-pass 4-10kb vs2**  
**Version 3: 0.75% DF Marker S1 high-pass 6-10kb vs3**  
**0.75%DF Marker S1 High Pass 15-20kb**

### DNA Marker S1 - Typical times to detector



### Estimated Collection Times

4-10kb high-pass	<b>~ 2 hours</b>
6-10kb high-pass	<b>~2 hours</b>
15-20kb high-pass	<b>5-6 hours</b>

### Performance Specifications

	<b>Version2</b>	<b>Version3</b>
<b>Accuracy, "BPStart"</b>	<b>N/A **</b>	<b>&lt;10%</b>
<b>Reproducibility, "BPStart"</b>	<b>N/A **</b>	<b>&lt;10%</b>

\*\* Accuracy and reproducibility are affected by the sample load amount. Refer to the High-Pass user guide for recommendations.

**Specifications subject to change without notice**

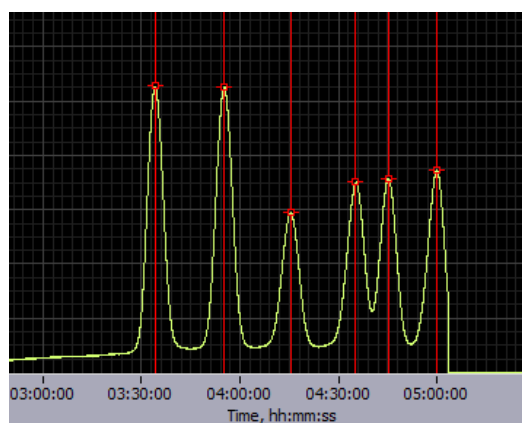
**\* see page 25-1 for specification definitions**

## 25.10 0.75% Agarose, High-Pass Protocols (30-40kb thresholds)

Use Product Number: **PAC30KB or BUF7510**

Use Cassette Definition: **Version 3: 0.75% DF Marker U1 high-pass 30-40kb vs3**

### *DNA Marker U1 - Typical times to detector*



**Approximate Collection Time is 9.5-10 hours**

### *Performance Specifications*

<b>Accuracy, "BPStart"</b>	<b>&lt;10%</b>
<b>Reproducibility, "BPStart"</b>	<b>&lt;10%</b>

\*\* Accuracy and reproducibility are affected by the sample load amount. Refer to the High-Pass user guide for recommendations.

***Specifications subject to change without notice***  
***\* see page 25-1 for specification definitions***

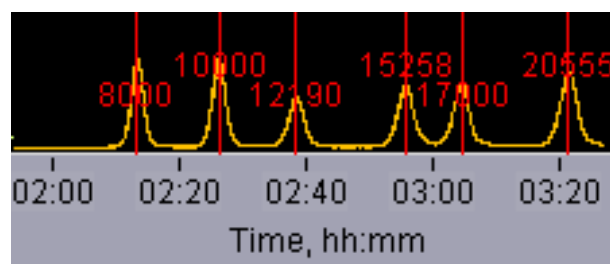


## 25.11 0.75% Agarose, 10-18 kb, Marker U1, Pulsed-Field (external marker)

Use Product Number: **BUF7510**

Use Cassette Definition: 0.75% Agarose Dye Free / **0.75% DF 10-18kb Marker U1**

### DNA Marker U1 - Typical times to detector



### Estimated Collection Times for Minimum Size Range (Tight) Targets

Target (bp)	Time to Time to Collect* (hr:min)
10,000	2:55
12,000	3:00
15,000	3:15
17,000	3:25
18,000	3:35

\* Run times are affected by temperature and broad range collections. Times should be used as an approximate guideline.

### Performance Specifications

Minimum Size Distribution as CV	20%
Accuracy	<10%
Reproducibility	<10%

**Specifications subject to change without notice**

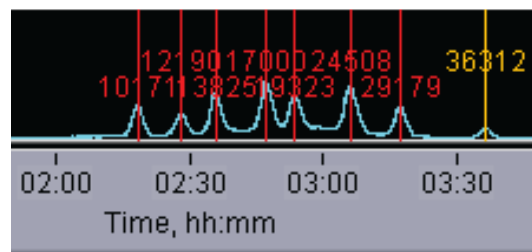
**\* see page 25-1 for specification definitions**

## 25.12 0.75% Agarose, 18-27 kb, Marker T1, Pulsed-Field (external marker)

Use Product Number: **BMF7510**

Use Cassette Definition: 0.75% Agarose Dye Free / **0.75% DF 18 - 27kb Marker T1**

### DNA Marker T1 - Typical times to detector



### Estimated Collection Times for Minimum Size Range (Tight) Targets

Target (bp)	Time to Time to Collect* (hr:min)
18,000	3:45
23,000	4:00
27,000	4:15

\* Run times are affected by temperature and broad range collections.  
Times should be used as an approximate guideline.

### Performance Specifications

Minimum Size Distribution as CV	20%
Accuracy	<10%
Reproducibility	<10%

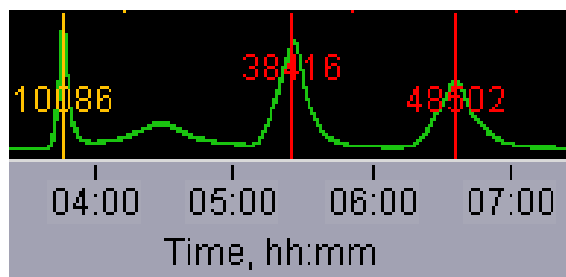
**Specifications subject to change without notice**  
\* see page 25-1 for specification definitions

## 25.13 0.75% Agarose, 50kb Target, Marker Z1, Pulsed- Field (external marker)

Use Product Number: **BHZ7510**

Use Cassette Definitions: 0.75% Agarose Dye Free / **0.75% DF 50 kb Marker Z1 - tight**  
0.75% Agarose Dye Free / **0.75% DF 50 kb Marker Z1 - broad**

### DNA Marker Z1 - Typical times to detector



#### Important!

“Range” mode programming is not allowed for this product. Only “Target” mode can be used. Two definitions are provided; “Tight” provides the narrowest distribution that is obtainable, and “Broad” provides a wider distribution around the 50 kb target for a higher product recovery.

### Estimated Collection Times

Target	hr:min*	Add (min)**
50kb tight	7:50	15
50kb broad	8:50	30

Target	50kb tight	50kb broad
<b>Minimum Size Distribution as CV</b>	<b>10%</b>	<b>14%</b>
<b>Accuracy</b>	<b>&lt;10%</b>	<b>&lt;10%</b>
<b>Reproducibility</b>	<b>&lt;10%</b>	<b>&lt;10%</b>

**Specifications subject to change without notice**

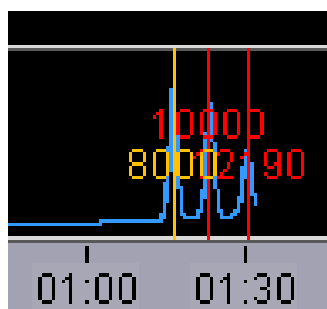
**\* see page 25-1 for specification definitions**

## 25.14 High Pass Plus, >15kb, Marker U1, (external marker)

Use Product Number: **BPLUS10**

Use Cassette Definitions: 0.75% Agarose Dye Free / **15kb High Pass Plus Marker U1**

### *DNA Marker U1 - Typical times to detector*



### *Estimated Collection Times*

Target	hr:min
>15 High Pass	2:30

At BP start	
<b>Accuracy</b>	<10%
<b>Reproducibility</b>	<10%

**Specifications subject to change without notice**

**\* see page 25-1 for specification definitions**



500 Cummings Center  
Suite 2400  
Beverly, MA 01915