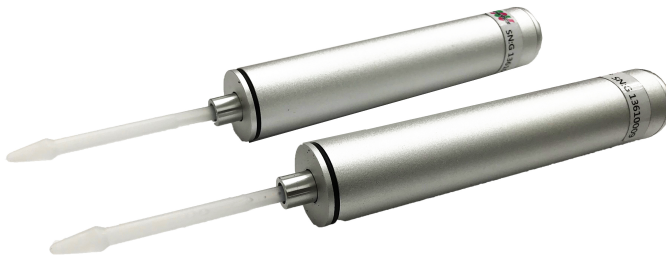


Tissue Grinder

Mixy Professional



CONTENTS

GENERAL INFORMATION	2
QUALITY ASSURANCE	2
COMPONENTS	2
SPECIFICATIONS	3
GENERAL PRECAUTIONS	3
CHARGING THE BATTERY	3
USING THE TISSUE GRINDER	3
ORDERING INFORMATION	4
CONTACT INFORMATION	4

GENERAL INFORMATION

NG010 Tissue Grinder Mixy Professional is a motor-driven grinder for resuspending pellets or disrupting soft tissue in microcentrifuge tubes. The motor is powered by a 3.7V battery and can be used cordlessly for up to 4 hrs.

QUALITY ASSURANCE

Each unit has been individually inspected for its function and temperature setting. Except for the battery, the unit carries a 6-month warranty against manufacturing defects and other problems under normal operation conditions. The battery carries a 3-month warranty.

For any inquiry or request for repair service, contact NIPPON Genetics EUROPE or your local distributor.

COMPONENTS

Mixy Professional	NG010
Tissue Grinder	1
Rechargeable Battery	2
Battery Charger	1
Sample Pestle	10
User Manual	1

SPECIFICATIONS

Mixy Professional	NG010
Power Supply	3.7V lithium battery
Speed (with no load):	12,000 rpm
Life time of the rechargeable battery (with no load)	4 hours
Dimensions	155 mm x Φ 23mm
Weight	0.2 kg

GENERAL PRECAUTIONS

- Don't spin the pestle before putting into a microcentrifuge tube.
- Don't push too hard while mixing. This is a motor driven grinder, not for hand operation.
- Put the positive electrode of the battery towards the bottom button.
- Take the battery out if the grinder is not going to be used for a long time.
- Avoid contacting with strong acid or alkaline and most of the organic solvents. Salt solutions also slowly corrode metal parts and therefore, should be avoided as well.
- The grinder is not water resistant. Absolutely no immersion of the unit in water.
- Only use the provided battery and battery charger.

CHARGING THE BATTERY

Screw off the bottom button from the grinder. Take out the battery. Put the battery on the charger. Battery charging process will be shown in the display. You can charge the battery in "BATTERY" and "USB" mode. The "USB" position enables the charging of a second device, which is connected via USB at the bottom of the charger.

USING THE TISSUE GRINDER

Take the grinder out. Place the pestle on the pestle adapter. Put the pestle into the microcentrifuge tube and use the bottom button to start mixing. Release the button after the mixing operation is completed.

ORDERING INFORMATION

Product	Cat.No.
Tissue Grinder Mixy Professional	NG010
Pestles 1.5 cm ³ (100)	NG006
Stainless Steel Pestle	NG011

CONTACT INFORMATION

NIPPON Genetics EUROPE GmbH
Mariaweilerstraße 28-30
D-52349 Düren
Phone: +49(0)2421-554960
Fax: +49(0)2421-5549611
Email: info@nippongenetics.eu
info@nippongenetics.de

For more detailed product information, contact details, questions, or trouble shooting please visit our English website www.nippongenetics.eu