



CondaChrome.<sup>®</sup>  
Inspired by color

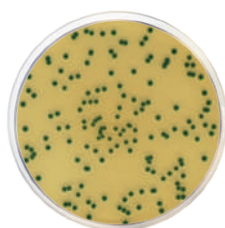
Inspired by knowledge

BACTERIA	PRODUCT	CAT. NUMBER	Food	Cosmetic	Water	Clinical
<i>Candida spp</i>	CondaChrome® Candida Chromogenic Agar	1382		●		●
<i>Cronobacter spp</i>	CondaChrome® Chromogenic Cronobacter Isolation Agar (CCI) ISO	1446	●			
<i>Escherichia coli</i>	CondaChrome® EC Agar with MUG Chromogenic Agar	1180	●		●	
	CondaChrome® EC with MUG Fluorogenic Broth	1285	●		●	
	CondaChrome® TBX Chromogenic Agar (Tryptone Bile X-Glucuronide) ISO	1151	●			
<i>Escherichia coli</i> O157:H7	CondaChrome® E. coli O157:H7 Chromogenic Agar Base	1588	●			●
<i>Enterococcus</i>	CondaChrome® Chromogenic Agar for Vancomycin-Resistant Enterococcus (VRE)	2077				●
	CondaChrome® m-EI Chromogenic Agar Base, Modified	2050			●	
	CondaChrome® M-EI Chromogenic Agar Base	1412			●	
<i>Escherichia coli</i> and Coliforms	CondaChrome® Lauryl Sulfate Chromogenic Agar	2096	●		●	
	CondaChrome® Lauryl Sulfate Chromogenic Broth	1465	●		●	
	CondaChrome® E. coli - Coliforms Chromogenic Medium	1340	●		●	
	CondaChrome® E. coli - Coliforms Chromogenic Agar (CCA) ISO	2080			●	
Gram-negative bacteria	CondaChrome® ESBL Chromogenic Agar	2062				●
	CondaChrome® KPC Chromogenic Medium	2063				●
Urinary infections	CondaChrome® Urinary Tract Infections Chromogenic Agar (UTIC)	1424				●
<i>Klebsiella</i>	CondaChrome® Klebsiella Chromogenic Agar Base	2119				●
<i>Listeria</i>	CondaChrome® Listeria Chromogenic Agar Base according to Ottaviani & Agosti (ALOA) ISO	1345	●			
Mesophilic bacteria	CondaChrome® Standard Method Chromogenic Agar (PCA)	1585	●	●	●	
<i>Pseudomonas spp</i>	CondaChrome® Pseudomonas Chromogenic Agar	1493	●	●	●	●
<i>Salmonella spp</i>	CondaChrome® Salmonella Chromogenic Agar	1122	●		●	●
<i>Staphylococcus spp</i>	CondaChrome® MRSA Chromogenic Modified Agar Base	1498				●
	CondaChrome® MRSA Chromogenic Agar Base	1423				●
	CondaChrome® Staphylococcus Chromogenic Agar	2076	●	●		●
<i>Vibrio spp</i>	CondaChrome® Vibrio Chromogenic Agar	2054	●		●	●

## CHROMOGENIC CULTURE MEDIA ACCORDING TO ISO STANDARDS

### CRONOBACTER SPP

ISO 22964

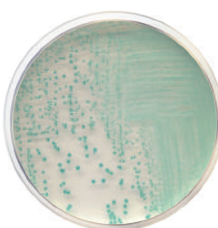


CONDACHROME® CHROMOGENIC CRONOBACTER ISOLATION AGAR (CCI) ISO  
Selective medium for isolation of presumptive *Cronobacter spp*

 |  CAT. 1446

### ESCHERICHIA COLI

ISO 16649

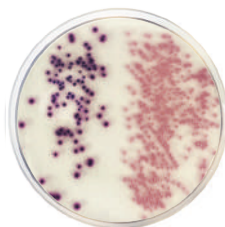


CONDACHROME® TBX CHROMOGENIC AGAR (TRYPTONE BILE X-GLUCURONIDE) ISO  
Selective medium for the detection and enumeration of *Escherichia coli* glucuronidase positive

 |  CAT. 1151

### ESCHERICHIA COLI AND COLIFORMS

ISO 9308



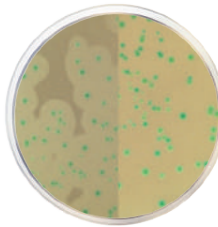
CONDACHROME® E. COLI - COLIFORMS CHROMOGENIC AGAR (CCA) ISO

Selective medium for enumeration of *E. coli* and coliforms in water samples

 |  CAT. 2080

### LISTERIA

ISO 11290



CONDACHROME® LISTERIA CHROMOGENIC AGAR BASE ACCORDING TO OTTAVIANI AND AGOSTI (ALOA) ISO

Supplements required (CAT. 6040 and 6031)  
Selective medium for the detection and enumeration of *Listeria monocytogenes*

 |  CAT. 1345

## APPLICATION AREAS



Water



Food

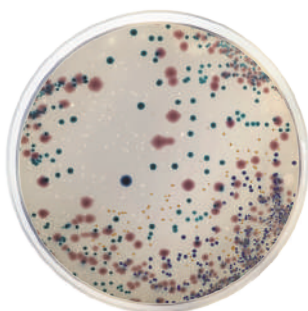


Cosmetic



Clinical

### URINARY INFECTIONS



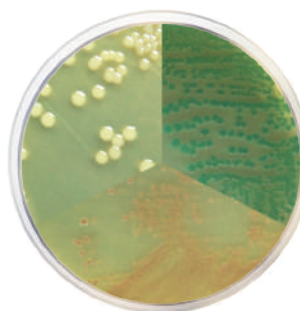
#### CONDACHROME® URINARY TRACT INFECTIONS CHROMOGENIC AGAR (UTIC)

For the presumptive detection and differentiation  
of organisms causing urinary tract infections



⚡ CAT. 1424

### VIBRIO SPP



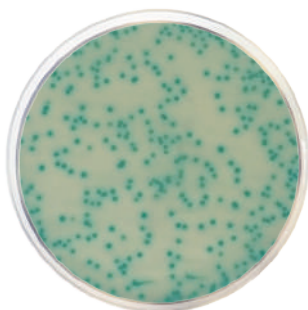
#### CONDACHROME® VIBRIO CHROMOGENIC AGAR

For isolation and detection of *Vibrio cholerae*,  
*V. parahaemolyticus* and *Vibrio alginolyticus*



⚡ CAT. 2054

### STAPHYLOCOCCUS SPP



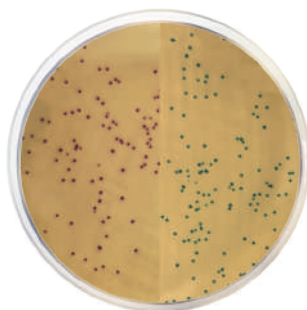
#### CONDACHROME® MRSA CHROMOGENIC AGAR BASE

Supplements required (CAT. 6069)

For the detection of methicillin resistant  
*Staphylococcus aureus* from clinical samples



⚡ CAT. 1423



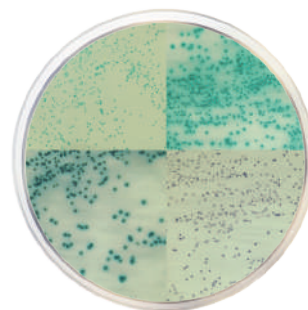
#### CONDACHROME® MRSA CHROMOGENIC MODIFIED AGAR BASE

Supplements required (CAT. 6069)

Selective medium for the detection and differentiation  
of methicillin resistant *Staphylococcus aureus*  
and *Staphylococcus epidermidis*



⚡ CAT. 1498



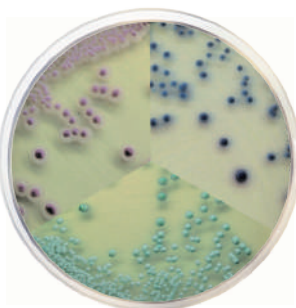
#### CONDACHROME® STAPHYLOCOCCUS CHROMOGENIC AGAR

For the detection and differentiation  
different species of *Staphylococcus*



⚡ CAT. 2076

## CANDIDA SPP



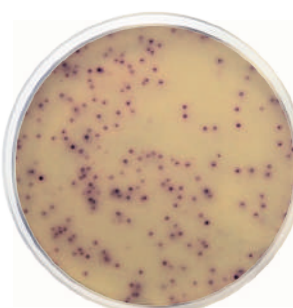
CONDACHROME® CANDIDA CHROMOGENIC AGAR

Selective and differential medium for isolation of and identification of *Candida spp*



CAT. 1382

## MESOPHILIC BACTERIAS



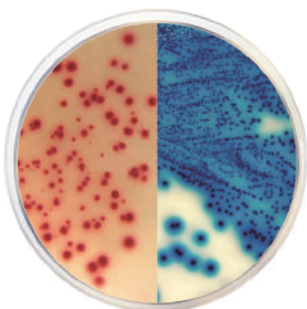
CONDACHROME® STANDARD METHOD CHROMOGENIC AGAR (PCA)

General medium for total microbial plate count



CAT. 1585

## GRAM-NEGATIVE BACTERIAS



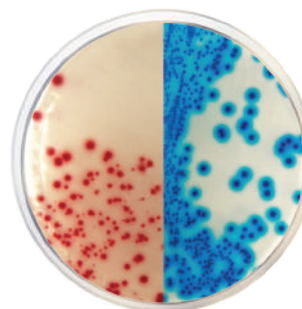
CONDACHROME® ESBL CHROMOGENIC AGAR

Supplements required (CAT. 6042)

Selective medium for overnight detection of gram-negative bacteria producing Extended Spectrum Beta-Lactamase



CAT. 2062



CONDACHROME® KPC CHROMOGENIC MEDIUM

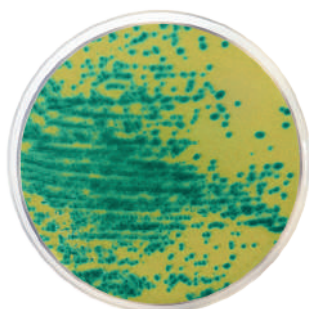
Supplements required (CAT. 6044)

Chromogenic medium for detection of gram-negative with a reduced susceptibility to most of the carbapenem agents



CAT. 2063

## ENTEROCOCCUS

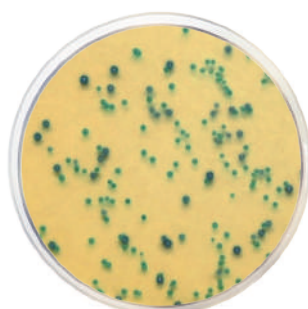


CONDACHROME® VANCOMYCIN-RESISTANT ENTEROCOCCUS (VRE) CHROMOGENIC AGAR

Selective medium for the detection of vancomycin-resistant *Enterococcus*



CAT. 2077



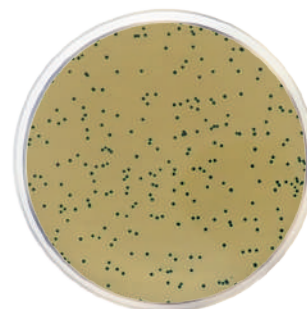
CONDACHROME® M-EI CHROMOGENIC AGAR BASE, MODIFIED

Nalidixic acid required

Selective medium for the isolation and differentiation of *E. faecalis* and *E. faecium*



CAT. 2050



CONDACHROME® M-EI CHROMOGENIC AGAR BASE

Nalidixic acid required

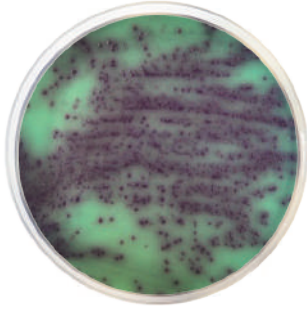
Selective medium for the detection and enumeration of *Enterococcus*



CAT. 1412



### ***PSEUDOMONAS SPP***

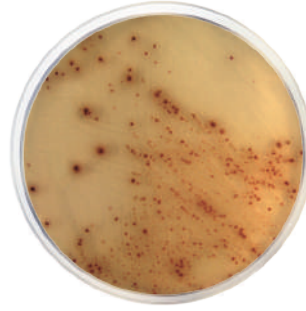


CONDACHROME® PSEUDOMONAS CHROMOGENIC AGAR

For the rapid isolation of *Pseudomonas* species



### ***ESCHERICHIA COLI O157:H7***



CONDACHROME® E. COLI O157:H7 CHROMOGENIC AGAR BASE

Supplements required (CAT. 6064)

Selective and differential medium for the detection of *E. coli* O157:H7



### ***SALMONELLA SPP***

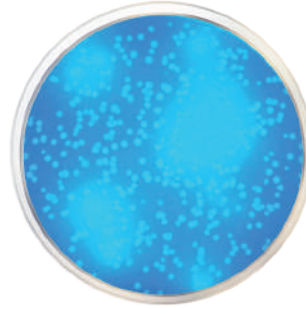


CONDACHROME® SALMONELLA CHROMOGENIC AGAR

Selective medium for isolation of *Salmonella* spp



### ***ESCHERICHIA COLI***

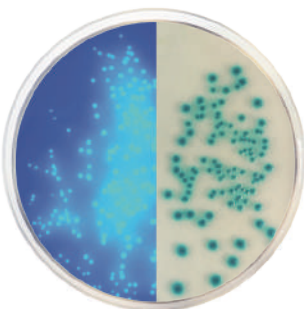


CONDACHROME® EC WITH MUG FLUOROGENIC AGAR

Medium for quick detection of *E. coli* by membrane filter technique



### ***ESCHERICHIA COLI AND COLIFORMS***



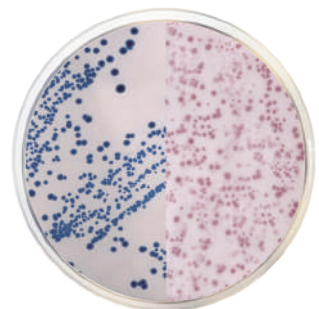
CONDACHROME® LAURYL SULFATE CHROMOGENIC AGAR

Selective medium for simultaneous detection of total coliforms and *E. coli* by fluorigenic procedure



CONDACHROME® LAURYL SULFATE CHROMOGENIC BROTH

For the enrichment and simultaneous detection of total coliforms and *E. coli*



CONDACHROME® E. COLI - COLIFORMS CHROMOGENIC MEDIUM

Selective medium for the simultaneous detection of *E. coli* and coliforms



# CondaChrome.®

Inspired by color



## Condalab

Inspired by knowledge

[export@condalab.com](mailto:export@condalab.com) | [www.condalab.com](http://www.condalab.com)